

**Thomas Lupo  
wins a title**  
— page 8



**Wrestlers win  
a title**  
— page 11



**Chamber schedules a  
business seminar**  
— page 2

# The Belleville Times

Serving Belleville Since 1909

Thursday, February 28, 1985

35¢

## Man charged with murder of wife

A 75-year-old man was charged with murdering his 59-year-old wife Friday morning at their home on Howard Place.

The man shot and killed his wife about 6:50 a.m. said Deputy Chief Frank Haight. Police were called to the scene by the husband about 7 a.m. They found his wife dead with bullet wounds in her chest, Haight said.

Police arrested the man and charged him with murder. He is being held at the Essex County Jail in Newark without bail pending a hearing by the grand jury, Haight said.

A handgun believed to have been used by the accused was found in the house. No motive has been established in the shooting, Haight said.

The investigation is being conducted by the Essex County Prosecutor's Office and Detectives Vincent Cappetta and Edgar Panier of the Belleville Police Department.

## Killer of cabbie gets life sentence

A 20-year-old man was sentenced to life in prison last Friday for the murder of a cab driver from Belleville.

Superior Court Judge Richard Newman sentenced Robert Byrd to life in prison for the murder of Paul Tronio, 56, and ordered him to pay the maximum penalty of \$10,000 to the state's Violent Crimes Compensation Board. Newman told Byrd he must serve 30 years before being eligible for parole.

Tronio was killed by a bullet in the back of the head. Byrd was convicted in January of felony murder, conspiracy to commit robbery, robbery and two counts of illegal possession of a .22-caliber handgun.

## Two found guilty of shoplifting

A Newark man and woman were found guilty on separate charges of shoplifting.

Todd McGlow, 20, was fined \$175 for shoplifting \$102.85 worth of merchandise from the K-Mart on Joralemon Street last December. He was also fined \$25 for the Victims of Violent Crimes Compensation Fund.

Francine Height, 28, was fined \$125 for shoplifting \$120 worth of merchandise. She was also fined \$25 for the Victims of Violent Crimes Compensation Fund.

## Matters in Brief

### Man jailed for drug possession

Joseph O'Shea of Netcong was found guilty last week for possession of a controlled dangerous substance with the intent of distribution and possession of drug paraphernalia. Judge Edward Abramson sentenced the 39-year-old to 30 days in jail and a total of \$625 in fines. He was also fined another \$50 for the Victims of Violent Crimes Compensation Fund.

When he was arrested last July 7, police found cocaine and various instruments used with drugs in his possession. He was also charged with threatening a police officer but that charge was dismissed.

### Seatbelt law effective March 1

New Jersey's mandatory seatbelt law will be enforced as of March 1 said Police Chief George Lister.

All front seat occupants of cars must wear seatbelts. A driver is responsible for front seat passengers 18 and under. Those 18 and older are responsible for themselves.

Lister said the new law does not change the present law regarding restraints for children under 5.

A \$20 fine for not wearing a seatbelt can only be enforced if police stop a vehicle for another violation, Lister said. He added that cars made before July 1, 1966 are exempt.

### Newark man is guilty of burglary

Ronald Tucker, 24, of Newark was found guilty and sentenced to 30 days in jail for burglary.

Tucker was arrested Feb. 19 at 12:38 a.m. after police investigated a broken window at a Main Street building and found him inside.

### Snow removal costs increasing

An estimated \$48,000 has been spent this year on snow removal and salting, said Joseph Grande, commissioner of Public Works.

Grande said that since Jan. 1 he has sent his employees out a total of 20 times for plowing and salting roads.

He estimated last year's cost between \$29-30,000. Grande said workers have already begun to patch up potholes and will eventually repave certain streets when warmer weather arrives.

The Department of Public Works conducts its business from two trails set up on its Cortlandt Street site and offices at 383 Washington Ave.



Getting Some Help

Photo by Michelle Jeannotte

An unidentified woman receives some help getting up after taking a fall on the corner of Greylock Parkway and Union Avenue last Thursday afternoon. The woman had apparently slipped on the ice while walking in the street. She refused medical treatment and reportedly walked to her home blocks away.

## Parents question school busing policy

By Michelle Jeannotte

Even though the weather turned warmer for a few days, the winter season is not over yet and many parents from the Soho area are concerned about whether or not their children will be bused to school.

About 20 parents from the School 10 area attended Monday's school board meeting to voice their complaints over the present transportation policy. Most of them were angered over the issue that when their children reach the third grade, they are not bused to school.

The present policy was enforced when schools 1 and 2 were closed, said Edward Appleton,

school board administrator/secretary. The policy, which applies only to these schools' students, entitles busing to those from kindergarten to second grade.

After the second grade, students are no longer bused because of the lack of availability of buses and funding, he said. Busing could be provided, however, based on other criteria.

### Magnet school

When School 2 was closed, schools 4 and 10 became home schools for that area, Appleton said. School 10 is also a magnet school for a basic skills program as is School 3 for the fine arts. A

magnet school is one that specializes in a certain area.

If parents wish to send their children to a magnet school, busing is provided under the policy, he said.

Appleton said the transportation policy, which was established in 1975, has had a number of revisions since. One such addition was the hazard formula which dealt with the number of intersections children would have to cross to get to school.

He said the board's transportation committee, of which he and trustee John DiStasi are members, is currently looking into

(Continued on page 3)



## Three candidates file for school seats

By Michelle Jeannotte

Three candidates have filed for two three-year seats on the board of education. A fourth, Barbara Cicalese of Fairway Avenue, declared her candidacy but dropped her name from the ballot because of personal reasons.

The three candidates vying for the two seats are incumbent Ernest Zoppi, Kevin Kennedy and Dr. Joseph Cappello. Grace Purdue, board president, will not run for re-election.

Zoppi, a past member of the board, became a member a year ago when Charles Miele resigned his post. Kennedy, although not new to the election race, has never won a board seat.

Cappello, however, is a first-time candidate. A graduate of Gannon University in Erie, Pa., he received both his bachelor's and master's degree in the field of education.

In 1981 he received a Doctor of Education degree in school administration and supervision from Fordham University where he was a graduate assistant.

Cappello believes that his background in education will be an asset to the board. He has been an educator for the past 14 years, including an elementary school teacher for three, an elementary school principal for six, and the Director of Services to Nonpublic Schools for the Essex County

Educational Services Commission for the past five.

### Progressive education

"We have a good educational program, but I'd like to see us more than status quo," he said. "Too many people believe that because we are in the range of other schools in our area, we should be happy with staying there."

"Education is progressive," he added. "It is not stagnant. We have to have a futuristic outlook in our approach to education. We should have an ongoing curriculum process with the teachers

(Continued on page 18)

## Area's fate soon to be determined

By Michelle Jeannotte

The fate of Washington Avenue, once a prosperous and growing commercial center, will soon be determined.

A public hearing on redevelopment proposals for the Avenue will take place March 19 at 7 p.m. This hearing will be one of the last steps the board of commissioners takes before it makes its final decision.

The hearing will give citizens a chance to voice their support or objections to blight proposals, said Mayor Michael Marotti. He added that commissioners will not make a final decision at this hearing and that the board has about 30 days afterwards in which to make a decision.

Much of the opposition to the redevelopment of the Avenue concerns a blight proposal. This proposal, agreed upon by the planning board and redevelopment agency, suggests that portions of the Avenue be declared blight area.

### Blight area

The area which has been designated for blight, according to a planning board report, includes Washington Avenue from Mill to William streets, east to the railroad and west to the depths of properties fronting Washington Avenue. A blight report from the redevelopment agency includes property from Mill Street (Newark line) north to Joralemon Street.

The recommendation from Grace Harris, consultant to the planning board, was based on information contained in the Blighted Area Study prepared by Township Associates, a private consultant, and the Planning Association of North Jersey.

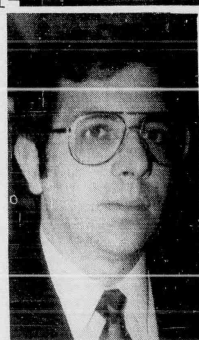
Observations made of this area concluded that the southern por-

(Continued on page 19)

## What's Inside

Births .....	7
Calendar .....	13
Classified .....	14-17
Editorials .....	4
Engagements .....	6
Golden Comments .....	4
Letters .....	4
Looking Past .....	4
Obituaries .....	19
Sports .....	11

Two Sections  
20 pages  
Vol. 76, No. 13



Dr. Joseph Cappello

# Chamber schedules an important March 5 business seminar

Howard Halpern, president of the Belleville Chamber of Commerce, has announced an important business seminar 7 p.m. March 5 at Belleville School No. 3.

The Chamber has invited Everett R. Shaw, executive director of Economic Development Corp. (EDC) of Essex County to speak on business expansion and growth in Belleville.

EDC offers a full range of loan packaging services from helping a "start-up" in putting together its business plan and projected needs to providing the mechanism for an established business's large-dollar

project to structure a more favorable, profitable deal. EDC works closely with financial institutions, federal, state and local government and private investors and capital sources. It is successful in using innovative techniques to package real estate and business development projects. Through use of conventional loans backed with industrial development bonds, urban development action grants, government guaranteed debentures and revolving loan funds, EDC is able to reduce overall interest rates, reduce risk and improve profit potential.

EDC maintains comprehensive listings and stays in touch with an active network of area realtors to assist clients in finding available commercial, office and industrial sites and building space in Belleville. Office space, warehouse or production facilities, improved or unimproved sites, lease or purchase opportunities are matched to specific user need. All requests for aid are kept strictly confidential. EDC periodically publishes reports and information regarding market supply and availability and other data relevant to site location.

At the request of a business, EDC's professional staff will take a close-up look at the business's needs and current management techniques, business services and systems. Staff will recommend plans and solutions likely to improve and accelerate profitability and expansion. While each business and project carriers within itself its own specific need and challenge, EDC staff are trained to meet this need and to join it with practical and

achievable plans and results. EDC services and sources address the following areas: regulations, government contracts, permits, trade assistance, sales, marketing, taxes, finance, accounting, legal issues, employee training, and incentives, insurance, location

needs, etc. The Belleville Chamber of Commerce believes that the future survival of Belleville is closely related to the survival of Belleville's business. The seminar is open to the public. Admission is \$5 per

person, tax deductible. Make checks payable to Belleville Chamber of Commerce and mail to: 155A Washington Avenue, Belleville, NJ 07109. For further information, call Michelle Dalbo, 9 a.m. and 2:30 p.m., 759-4848.

## Chamber announces contest winners

Winners in the Belleville Chamber of Commerce "Dinner at Nannina's Restaurant" contest include Joe Cappello, Towne Deli; Celeste Federico, The Belleville Times; Kenny Jacobus, 3 Guys from Italy; Brenda Hancock, First Jersey Bank; Henry Becker Jr., Motorcycle Mall; Ralph

Rotunda, Jovial Card and Gift Shoppe; Irving Scheps, Mansol Cleaners; Judy Chimento, Ever-ready Label; Harvey Owens, DeMarco Auto Body; Ann Condel, Van Dyke; Debra Caselli, Plaza Men's Shop; and Flora Nicotia, Sherman's Children's Wear.

## INCOME TAX

Returns Prepared Professionally In My Office

CALL 450-9710

## Pharmacy Footnotes

Vincent Cazzorelli Reg. Ph.

**PENICILLINS**  
Penicillins are antibiotic, anti-infective drugs derived originally from a mold called penicillium. Lately, a variety of penicillins are produced by chemically modifying the basic chemical contained in the mold. All penicillins contain the same basic chemical structure. However, the structure is modified to produce drugs with different bacterial characteristics. As a result, one may be preferable to another in a given situation. Penicillins may either kill the organisms causing infection or merely slow them down, allowing the body's defenses to take over. Some penicillins are active against only a few bacteria, while others are active against a wide variety. Penicillins are not effective against viruses, fungi, rickettsiae or yeasts. Always take all the penicillin prescribed by your doctor.

It's important to read and follow carefully the instructions on the label of your prescription medications. With some drugs you need to avoid certain foods or drink, others need to be taken with milk or food and still others on an empty stomach. If you don't understand the instructions feel free to ask your pharmacist at ROSSMORE PHARMACY, 338 Washington Ave., 759-1958, 759-1956. Hours: Daily 9am-10pm, Sunday 9am-5pm.

**HANDY HINT:**  
It is best to take penicillin on an "empty stomach" either one hour before or two hours after a meal.

## AUTO INSURANCE PROBLEMS?

- Free Quotes
- Same Day Coverage
- No Obligation
- Personal Service

"Selling Insurance Since 1915"

**Eugene J. Reilly**

Real Estate - Insurance  
Auto - Home - Life  
394 Washington Ave. Belleville  
759-1682

## OVER 1500 MOVIES

NO CLUBS, NO MEMBERSHIP FEE  
**NOW SHOWING!**

GRANDVIEW USA  
WOMAN IN RED  
ALL OF ME  
POLICE ACADEMY  
RED DAWN  
EVIL THAT MEN DO  
TIGHTROPE  
THE NATURAL  
ADVENTURES OF BUCKAROO BANZAI  
WILD LIFE  
MUPPETS TAKE MANHATTAN

WEEKDAY SPECIAL  
3 Tapes for 2 Days... \$8

Rent any Tape \$1.89  
Tues.-Thurs. . . .

- All Ratings G-XXX
- We Rent and Repair VCRS
- Over 1500 Movies
- Videotaping For All Occasions

Coming Soon: Gone With The Wind, Bachelor Party, Toy Soldiers, Crimes of Passion, Revenge of the Nerds, Star Trek III, Once Upon A Time In America

**Instant Video**

186 Main Avenue  
Passaic Park • 778-4751

Open Daily till 9 p.m.

## HEALTH WISE



All vital organs and muscle tissue need a constant, unobstructed flow of nerve energy from the brain in order to function properly. A jolt, an accident or excessive strain may cause a spinal vertebra to move out of alignment with its neighboring vertebrae.

When this happens, the nerves that pass through and between the vertebrae may become pinched. The flow of energy is diminished or cut off. Pain and disease can result unless the cause of trouble is found and corrected.

A chiropractic examination will determine if and how chiropractic could help you. Phone for an appointment.

DR. RALPH J. DI MAIO  
Chiropractor  
625 Joramelon St. Belleville 751-8805

## Another DeCarlo Listing!



Open House Sunday, March 3rd  
2 - 4 P.M.

161 Pake St. Nutley

Great Starter Home! Charming Colonial features new kitchen, 2 bedrooms, 2 full baths, and is beautifully decorated. Finished basement and more! Asking \$119,500.00. See it Sunday!

**Ann DeCarlo**

AGENCY/REALTOR

880 BROAD ST., BROOKDALE, BLOOMFIELD  
748-5288

MEMBER  
**RELO**  
REAL ESTATE  
RELO Inter City  
Relocation

1885

1985

100 Years of Uninterrupted Dividends

**GIVE THE TAX**

WITH FIRST DeWITT's  
**High Rate IRA\***

\*Individual Retirement Account

You cut taxes and SAVE!  
You get a HIGHER RETURN on savings  
Your funds increase FAST  
You get total SECURITY!  
And you retire RICH!

OPEN AN IRA NOW AND SAVE ON 1984 INCOME TAXES



**1 FIRST**  
**DeWITT SAVINGS**  
AND LOAN ASSOCIATION

BELLEVILLE • BLOOMFIELD & CEDAR GROVE

TELEPHONE **751-2800** ALL OFFICES

## TOWNE DELI

### SPECIALS

- 1/2 lb. HOT REAL JEWISH CORNED BEEF \$2.38
- 1/2 lb. BREAST OF TURKEY \$1.78
- 1/2 lb. HORMEL HARD SALAMI \$1.83
- 1/2 lb. THUMANN'S GERMAN BOLOGNA \$1.28

650 JORALEMON ST.  
Cor. Franklin Ave.  
Belleville  
751-3935

Residential - Industrial - Commercial Catering

Member of Belleville Chamber of Commerce

## Busing...

(Continued from page 1)

alternatives. He said that a policy could be devised whereby students accumulate mileage points and when they reach a certain number, they can be bused. This system would be developed as a uniform policy throughout the district.

Trustee Gabe Nazzari addressed the audience with facts about the state's transportation policy. He said that students from kindergarten to the eighth grade who live more than two miles from their school have to be bused as do students from the ninth to 12th grades who live more than two-and-a-half miles.

He said that the state only provides funding for these guidelines and that if the board approves of busing students who live less than that, taxpayers would have to provide the money.

"We listen to your problems and want to give you more for your tax dollars," he said. "But when we tell you it will come from the taxpayers by way of our budget, you answer us by defeating it 20 times out of 21 years. If you want these services, you have to show us by passing the budget on election day."

Parents, however, did not seem to be satisfied, and many brought up ideas that could be incorporated when guidelines for a new policy are established.

### New factors

Michael Blase, a resident of the area, said that the number of new condominiums in the Mill Street area should be accounted for because at least 100 new families would be moving in.

"There will be more ratables in the Soho area because they are building condominiums and four- and five-family homes," he said. "If it costs money for busing,

these ratables should be used for it."

Appleton said that when the transportation committee develops new guidelines for its policy, it will be presented before the board at one of its public meetings. He said that parents are encouraged to listen and discuss their ideas with the committee then. He added that a new policy will not be developed that night.

## Zionist Affairs Day March 12 in city

The Northern New Jersey Region of Hadassah will hold a Zionist Affairs Day 10 a.m. to 2 p.m. March 12 at the organizations headquarters in New York City.

Additional information on the day's proceedings can be obtained from local Zionist affairs chairman, Ruth Linz, Belleville and Nutley and Elsie Form, Bloomfield.



**REALTY WORLD®**

**THE RESULTS PEOPLE.™**

**BAUMGARDNER AGENCY**



JAY BAUMGARDNER GRI  
BROKER

**SPECIALIZING IN RESIDENTIAL PROPERTY  
FOR OVER 35 YEARS**

Services Offered:

- \* REAL SAFE - Home Protection Plan
- \* REAL LINE - National Referral Service
- \* Appraisal Services and Insurance
- \* Career Opportunities

Covering

Bloomfield - Glen Ridge - Nutley - Belleville

378 Broad Street, Bloomfield, N.J.

743-8382

# INTRODUCING THE INFLATION FIGHTER!

*Exclusively At*



**THE  
GROUND ROUND**

720 Washington Ave.

Belleville

(Pathmark Center)

**751-9307**

*For more tempting meals*

We're making it easier to afford those high costs of dining out, with our *Inflation Fighter, Sandwich Specialty Coupon*. Choose from many delicious deli & specialty sandwiches such as N.Y. Style Reuben, French Dip, Beef Bar-B-Que and many more!



**THE  
INFLATION FIGHTER  
SANDWICH SPECIAL!!**

Buy 1 of our many various deli or specialty sandwiches and receive the 2nd one for only 1/2 price. Offered only at:

**THE GROUND ROUND  
720 WASHINGTON AVE.  
BELLEVILLE (Pathmark Center)**

Offer Expires 3-7-85



**1099 BUY RITE LIQUOR**

PRICES EFFECTIVE: THURS. FEB 21ST THRU SAT. FEB 23RD

YOU CAN'T AFFORD NOT TO BUY RITE!

MINI VAN WINNER RAY JOHNSON OF Keyport

CONGRATULATIONS

COFFEES FOR \$1.15

Friday Nite is Ladies Nite 5 p.m.-10 p.m.

**NUTLEY WINE SHOP**  
558 Franklin Ave. Nutley 667-1315



# The Belleville Times

Serving Belleville Since 1909

Published Every Thursday  
At 1554 Washington Ave.  
Belleville, N.J. 07109

Annual Subscription \$12.00  
Senior Citizens \$7.00

Newsroom: Classified Ads:  
667-2100 667-3000  
Display Ads: Circulation:  
667-2700 667-2103

Second Class Postage Paid  
At Newark, N.J. (USPS 400-280)

**Publisher:** Frank A. Orechio  
**Executive Editor:** Steven H. Solomon  
**Editor:** Michelle Jeannotte  
**Copy Editor:** Helen Maguire  
**Sports Editor:** Steven Rothstein  
**Production Manager:** David Salata  
**Graphic Artist:** Diane Lembo  
**Sales Representative:** Celeste Federico

## It's sobering matter

It came as no surprise to us when we learned last week that a county official believes drug use is increasing. As Belleville Times Editor Michelle Jeannotte reported, the official explained that drugs are used by more people than we would like to think, and the problem is getting worse at an alarming rate.

What we did not expect to hear from Joseph Pariso, of the Essex County Prosecutors Office, is that society cannot just blame the "other guy" for the problem. He said responsibility should be shared by government, family, teachers, and students.

We never looked at it this way. And if you stop and think about it, Mr. Pariso is right. The problem is immense because it will be solved only by a combined effort waged by all segments of society. If only one group attempts to make things better, it won't be enough.

The statistics are startling. According to Mr. Pariso, a fellow who starts drinking at 21 years old has a 13 percent chance of becoming alcoholic. He said a child who starts drinking at 13 years old has an 80 percent chance of becoming alcoholic. This is certainly sobering.

Mr. Pariso believes that drug abuse, along with drinking

problems, can be worked out if people are educated when they are young to the dangers that are likely. He admits that the road to recovery is tough for someone already addicted, but said that even if that is accepted as a fact, why not spend more time with impressionable youths who are not yet addicts.

This makes sense, and we applaud his efforts, recognizing that Mr. Pariso's speaking engagements throughout the county are probably grinding and sometimes frustrating. He even went a step farther, and compiled a booklet for distribution that talks about some of the problems people have when confronted with a drug or alcohol problem.

"I never lie to kids," Pariso said, explaining that he prefers to answer questions factually when put to him by a youth. He said he leaves decisions up to the individual, who he hopes will make the right choices after sifting through all the information.

Mr. Pariso has been lecturing at Belleville schools for the last 10 years, and we thank him for his effort and his concern. The cliché, "if he helps just one person, it's worth the effort," seems appropriate here. And even though it's a cliché, it's true.

## Letters to the Editor

### Dinner raises much-needed funds

To the editor:

Close to 250 people came to the annual St. Valentine's Day Dinner sponsored by the Friends of Vincent T. Strumolo and all came out for a great cause.

Close to \$1,000 was raised for former Belleville resident, Mrs. Anna Palmisano Squarino who was born and raised in Belleville and is in need of \$80,000 for a liver transplant. Former Assemblyman John Kelly came and donated a check of \$500 to help. Vincent T. Strumolo took the proceeds of the affair and gave a donation to Mrs. Rhoda Fried, who was introduced by Township Clerk Mary

Lou Hood, who came on behalf of the Phil Portnoy Humanitarian Association, P.O. Box 22, Union, N.J. 07082, who is helping this woman get a chance at life.

I would like to thank the committee: Mike Biase, Mike Bruno, Nancy Bruno, Vincent T. Strumolo, Jr. and Helen Strumolo who had faith from the beginning and former Assemblyman John V. Kelly, president of Nutley Savings and Loan and most of all to Vincent T. Strumolo for staying involved. See everyone next Valentine's Day.

Sincerely,  
Kevin G. Kennedy  
Co-chairman

## Golden Comments

by James R. Golden

Rega is right! Jackie Rega's letter to the editor of the Belleville Times hit the nail on the head with a sledge hammer blow when he wrote "Let's keep the politicians out of business because they have no business in business."

This highly successful businessman who operates the profitable "Jackie's Corner" popular Lemon Ice stand clears the air about the bickering concerning the future of Washington Avenue. He correctly sounds the strong note that investors don't need a business site to be vacated to realize its potential. He cites numerous illustrations of Belleville development undertaken by private business vision at their own expense, not the taxpayers of the township.

We all are familiar with the leveled truly blighted remains of Newark's once beautiful Broadway, Summer Avenue and Mr. Prospect Avenue. Do we want that to spread the "blight" right up south Belleville? Who are those supposed developers, who would, without HUD money, cut off by the Reagan Administration, be interested in this mythical development bonanza?

As the Lemon Ice king (Rega) contentedly suggests, "Unless they (BRA and town officials) have some guarantees and contracts with up front money, it would be unwise for the Town of Belleville to go into this costly project without any assurance of what the future might bring." We recognize Mr. Rega's down to earth reasoning when he writes, "In business, we do not give up current ratables unless there's reassurance. A bird in the hand is worth two in the bush."

There are provisions in the law that, with local code enforcement authority, can require property where necessary,

but, it doesn't justify designating an entire area "blighted" that depreciates the value of property and could disrupt the lives of many people and business management.

Mr. Rega's allusion to Washington Avenue as possibly being made the scapegoat for politicians who want to run for office may have merit and bears looking into, there is scant room for politicians getting their hands involved in land and business development.

The sad devastation wrought by the urban redevelopment era that brought slums, gutted, razed and burned-out buildings to many of our principal cities is the pitiful monument erected to the folly of misplaced redevelopment which created an acre of destruction and despair. We would not want that to happen in Belleville.

A public hearing on the redevelopment of Washington Avenue is slated for 7 p.m. March 19 at either the high school or the board of education complex on Cortlandt Street. The place will be announced later.

Mayor Marotti wants a public hearing to give citizens the chance to voice their opinions of the project. The commissioners can reject or approve the proposal to declare the areas including Washington Avenue from Mill Street to Williams Streets, east to the railroad and west to the property fronting Washington Avenue as blighted.

We strongly urge that all those interested in preserving this community's suburban atmosphere and lifestyle attend this important public meeting to inform our town fathers how we feel about a high-risk formula that could be most disruptive. Attend that meeting and speak out. It's your town! Keep politics out of it.

## A Look Back In Time

One year ago ...

Belleville High School basketball players Phil Colalillo and Jennifer Apicella made history as they broke the 1,000-point and 2,000-point scoring marks, respectively. Colalillo was the first player in Belleville boys' history to break the 1,000-point mark in his junior year. Junior Apicella scored her 2,000th point when Belleville battled Shabazz High School at Belleville.

Patricia Lydon, a Nutley resident, was selected deputy grand marshal of the township's fifth annual St. Patrick's Day parade. Lydon is a first generation American whose parents emigrated from County Mayo, Ireland. Lydon pens a column for the Irish Echo, a New York City-based newspaper with the largest circulation of any Irish-American paper in the country.

## Priorities are all wrong

If you want to hear about something that makes no sense at all, here is the story of justice American style and how the wronged are often wronged over again, even after officials discover an unlawful situation.

It seems that in Belleville, there was a chemical company located on Main Street that manufactured food flavorings. There is nothing wrong with that, but residents complained about burning eyes and skin irritations nearly two years ago, and officials traced the problem to the plant.

In real life we'd expect the company's management to correct the problem. In a television drama we'd expect things to get so fouled up that the government would close down the plant and take over its facilities. In this case, the television drama became real life.

And what we find is that more than 1,000 containers of noxious chemicals were identified, repackaged and removed. Underground tanks are being located and will be torn out. The building and the land must be decontaminated if anyone ever wants to work there again.

No one knows precisely what all this will cost, but the township has budgeted about \$600,000 for the job and wants the state to contribute \$1 million. That's a lot of money, and

it comes from taxpayers.

But here comes the unbelievable part of the story. The same plant president who has been charged with conspiracy, the unlawful release of substances into the sewer system, the illegal discharge of pollutants, and unlawfully disposing of hazardous waste, is now suing the township.

According to a Superior Court judge, there is some argument that the chemical plant suffered damage while in the custody of the township. Allegedly, some pipes froze, some equipment was vandalized, and some documents were discarded. The judges seems to think damages could be awarded.

What a sham it is when a chemical company pollutes the neighborhood and then its management turns around and sues for some minor matters. It takes incredible galls. So the taxpayers now will not only pay for the cleanup of the muck, but will pay for the chemical plant's frozen water pipes. We think priorities are wrong here. The courts should be getting some answers from these people, not putting the township on the defensive. We hope the judge never lives in an area that gets polluted in this manner. But then, maybe he'd get his priorities straight.

## Question of The Week

By Stacy Wolf

Question: Are you planning to buckle up March 1?



Elsie Albertine  
housewife  
3 Joralemon St.

"I don't really use my seat belt that often. I guess they are a good idea, but I'm always afraid of not being able to get out of my car because I can't unbuckle my seat belt."



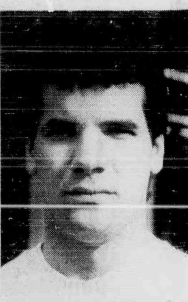
Howard Hogenbirk  
businessman  
44 Columbus Ave.

"I guess so if I have to. I don't use my seat belt now, but I will be when the law goes into effect. I imagine I will feel safer driving with my seat belt on and it's just something I will get used to in time."



Paul Long  
police officer  
393 Washington Ave.

"The way the law goes into effect is we won't specifically be out looking for people not wearing their seat belts. It will be in conjunction with pulling them over for traffic violations of some sort. We then will be able to see whether or not their seat belts are buckled. The law is basically for people's protection."



Tom Ceasare  
produce wholesaler  
242 Washington Ave.

"I think it's a very good idea to have this law. It will protect people. I feel seat belts are a real asset. I've always worn mine. It makes driving safer for everyone."

## How To Reach Your Public Servants

U.S. Sen. Frank Lautenberg (D)  
970 Broad St.  
Newark, N.J. 07102

U.S. Rep. Robert Roe (D-R)  
66 Hamilton St.  
Room 102  
Paterson, N.J. 07655

State Assemblyman  
Stephen Adubato (D-30)  
260-264 Liberty St.  
Bloomfield, N.J. 07003

Civ. Exec. Peter Shapiro (D)  
Hall of Records  
Room 520  
465 High St.  
Newark, N.J. 07102

Mayor Michael Marotti  
Commissioner Michael Pizzi (Welfare)  
Commissioner Ralph Di Ruggiero (Safety)  
Commissioner Joseph McGreevy (Revenue)  
Commissioner Joseph Grande (Works)  
Town Hall  
152 Washington Ave.  
Belleville, N.J. 07109

U.S. Sen. Bill Bradley (D)  
P.O. Box 1720  
Union, N.J. 07083

State Sen. Carmen Orechio (D-30)  
800 Bloomfield Ave.  
Nutley, N.J. 07110

State Assemblyman  
Buddy Fortunato (D-30)  
559 Bloomfield Ave.  
Montclair, N.J. 07042

Freeholder Arthur Clay (R-5)  
Hall of Records  
Room 558  
465 High St.  
Newark, N.J. 07102

School Supt. Michael Nardiello  
School Administrator Edward Appleton  
Asst. School Supt. Michael Lally  
High School Principal Joseph Caccone  
Middle School Principal Mario DiNagaglio  
School Board Complex  
190 Cortlandt St.  
Belleville, N.J. 07109

Readers are invited to send this newspaper a copy of any letter of interest sent to one of the officials on this list. We will publish the letter and send the official a copy of the paper in which the letter appears.

Letters should be signed for publication and include a complete address and telephone number through which the letter can be verified. The street address and telephone number will not be published.

All letters should be addressed to:  
Letters to the Editor, The Belleville Times,  
800 Bloomfield Ave., Nutley, N.J. 07110.

The Belleville Times



# Terminated Roche employees given access to career center

By Lisa Grimaldi

For many of the terminated workers of Hoffmann-La Roche, the impact of their job losses has given way to their search for new jobs. These former employees are facing the reality of having to find another job. For many, it is the first time they have had to look for a job in over a decade.

To assist the estimated 1,000 terminated workers, including many from the Nutley, Belleville, and Clifton plants, Roche has opened a career center at 1255 Broad Street in Bloomfield, according to spokeswoman Carolyn Glynn.

The center opened Feb. 10, one week after the workers were terminated, and will remain

available to the Roche workers affected by the staff reductions until June. It will service those employees from the North Jersey area, while in Belvidere, a second career center will be available to the workers affected in that part of the state.

"The career center will provide several functions for the terminated employees," said Glynn. "They can learn of job openings at other companies, and we will also type their resumes, and mail them to prospective employers."

## Expert on hand

In addition, a benefits expert is on hand to explain any questions that the former workers might have about their benefits/severance packages.

There is also a representative from the Roche credit union, to assist the former employees who remain members of the union.

Attendance at the career center has been "excellent" according to Glynn, but there were no figures available on how many people have used the center, or on those individuals who actually found new positions.

"The company has initiated a search to contact more than 250 companies in the metropolitan area for job openings for their terminated workers," said Glynn.

She also said that Roche has had more than 100 unsolicited inquiries from companies as far away as California that are interested in the former Roche workers.

## Cuts to save money

The staff reductions were made to save Roche an estimated \$50 million a year, according to Glynn. Several factors were responsible for the cuts in staff.

She cited a delay in the approval of new Roche drugs, increasing economic pressure in the foreign vitamin market, and increased research costs as reasons for the terminations.

Since August, employees had been notified that the company would undergo changes. Although Roche had record sales in 1982 and 1983, long-term projections for the next five years showed that Roche needed to consolidate and cut back its current operations.

An internal task force, comprised of employees in all areas and levels, was chosen in August to put together recommendations about how the company could be streamlined.

As part of the streamlining effort many of the employees who survived the staff reductions have found themselves in new departments and positions.

"There has been a variety of changes in responsibilities to avoid duplication and to achieve a

consolidation of functions," said Glynn.

"People are moving quickly to act professionally and complete the streamlining process."

There had been no official

word on rumored pay cuts for the remaining employees, but Glynn said that there will be a review of all benefits and compensation for the remaining employees in the spring.

## VFW women hear Dr. Orsini

Dr. James M. Orsini, associate attending on the Clara Maass Medical Center medical staff, recently spoke to VFW Women's Auxiliary Post 275 of Belleville on breast and uterine cancer. The program was presented at the auxiliary's monthly meeting and coordinated through the Clara Maass Medical Center's Speakers Bureau.

Dr. Orsini received his medical degree from the University of Bologna, Bologna, Italy and completed his training at Saint Joseph's Hospital, Paterson, and the New Jersey College of Medicine and Dentistry. He received three oncology fel-

lowships from Newark Beth Israel Hospital, Mount Sinai Hospital and the Milan Institute of Cancer, Milan, Italy. Dr. Orsini joined the medical staff at Clara Maass Medical Center in 1979 specializing in oncology.

Clara Maass Medical Center's Speakers Bureau offers organizations the opportunity to learn the accurate, up-to-date information on health care related subjects. To arrange a speaker for your group, contact the Clara Maass Public Relations Department at 450-2267. All speakers require at least four weeks notice to the day of the speaking engagement.

## St. Peter's registration set

Registration for St. Peter's Elementary School will take place 9 a.m. to 1 p.m. March 7 in the school library. Registration is open only in the following grades: pre-school/nursery, kindergarten, 1, 3, 4, 5, 6, 8.

Requirements: non-refundable fees — registration \$20; PTG dues \$3; sports association dues \$3. Certificates: birth and baptismal if not baptized at St. Peter's.

Age: kindergarten, 5 years by Dec. 31, 1984; grade 1, 6 years by

Dec. 31, 1984.

Health records: DPT and booster, oral polio and booster, rubella and measles vaccine, mumps vaccine, (tuberculin test suggested.) No child will be registered without all of the above health records.

Deposits (non-refundable): school uniform, girls-\$20, boys-\$5 (grades 1 to 8); gym \$5.

St. Peter's parishioners; if you are an envelope-user, bring one with you. St. Peter's admits students of any race, color and ethnic origin.

## Clara Maass has expanded service

Clara Maass Medical Center will be expanding the hours of its Tel-Med service on weekends to better deal with an increasing public concern about maintaining and improving health.

Tel-Med is provided as a free community service. It is a health information by-phone system consisting of numerous pre-recorded tapes. These tapes deal with a variety of health-related topics ranging from cancer to the proper use of seat belts. The service is not to be used in an emergency or as a substitute for your doctor, but is intended to better educate people on health matters and alert them to possible symptoms of disease.

Currently Tel-Med is open from 9 a.m. to 6 p.m. Monday through Friday, 10 a.m. to 3 p.m. Saturdays, and closed Sundays and Holidays. The change will extend service to 9 a.m. to 6 p.m.

For a free Tel-Med brochure write to: Tel-Med, c/o Clara Maass Medical Center, 1 Franklin Avenue, Belleville, N.J. 07109, or contact the Clara Maass Public Relations Department at 450-2267.

## Pat Cooper set as Cappy's guest

Fred Capitani of Cappy's Casino Corner will have comedian Pat Cooper as his guest this week. The show is aired on OBC channel 36 three times weekly.

Capitani and an all-star cast will appear in person 7:30 p.m. March 7 at Romanissimo's Restaurant, Route 17, East Rutherford.



### Buying a home?

Call us and compare our Homeowners Insurance price and coverages with the others. Maybe I can save you some money.

**Call for a quote on your Homeowners Insurance.**

**"Call me for details."**

**Jim Norton August Bianculli**  
369 Broad St.  
Bloomfield, N.J.  
**429-0335**

**Allstate**  
Allstate Insurance Co., Northbrook, IL  
Optional in NJ state on Allstate Insurance Company Standard and Deluxe Homeowners Policies.

## NEED BRAKES?

**OL' BETSY AUTO REPAIR**  
504 Washington Ave. Belleville, N.J. 07109  
All Work Fully Guaranteed 759-5561  
Over 25 Years Experience N.J. Inspection  
Snow Plowing Professional Auto Repair  
N.I.A.S.E. Certified Automotive Technician



## CARMINES PUB & RESTAURANT

118 Franklin Ave.  
Nutley, N.J.  
661-4333 661-4306

**Catering For All Occasions Banquet Facilities Available!**

**ALL YOU CAN EAT**  
Mon.- Mussels .....\$2.00  
Tues.- Spaghetti .....\$2.00  
Wed.- Calamari .....\$3.00  
Thurs.- Mussels .....\$2.00  
Fri.- Popcorn Shrimp..\$3.00  
Sat. Special - 1 Doz. Steamers or Clams on 1/2 Shell Only \$3.75

**ENTERTAINMENT**  
Friday & Saturday Nights  
**Dinner Special**  
Lobster Fra Diabolo (served with spaghetti) \$6.75  
**Luncheon Specials**  
Daily 11:30-3:00 \$1.95 - \$3.95

Thurs. Ladies Nite Drinks 1/2 Price  
Atlantic City Bus Ride  
Call and Book Early For March 2nd

## GETTING A BREAK FROM THE IRS IS A...

Have an urge for a tax break? Then we've got a sweet deal for you. Open an IRA account with Nutley Savings and plan for your future financial security and at the same time arrange for a substantial deduction on your Federal Tax Return.

You can deposit up to \$2,000 a year, and even more if you're married... \$2,250 if either you or your spouse works and up to \$4,000 for working couples.

You pay no taxes on your IRA deposits or on the interest you earn until you begin to withdraw the funds at retirement. Your money makes money and you get the tax break you're looking for.

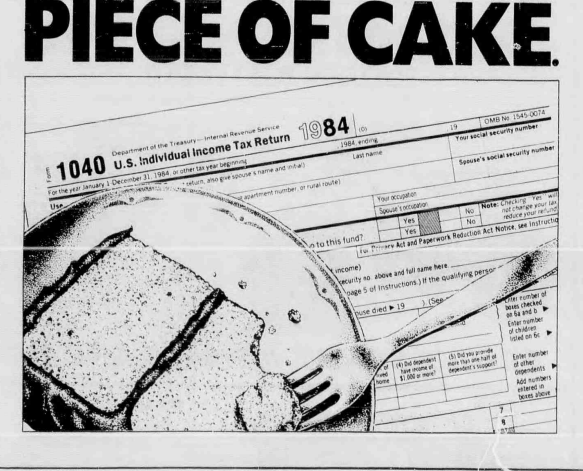
Choose from a variety of Individual Retirement Accounts paying high market interest rates. Interest is paid from the day of deposit. So why wait!

It's a tax advantage you can afford to pass up. Stop in today and turn your next coffee break into a tax break. It's that simple. Getting a break from the IRS is a piece of cake.

**Nutley Savings**  
NUTLEY SAVINGS ASSOCIATION

MAIN OFFICE: 271 Franklin Ave., Nutley, N.J. 07110 Phone 661-5207  
BRANCH OFFICE: 221 Washington St., Newark, N.J. 07102 Phone 629-7090

## PIECE OF CAKE.



Department of the Treasury - Internal Revenue Service  
**1040 U.S. Individual Income Tax Return 1984**

For the year January 1 to December 31, 1984, or other taxable year beginning on \_\_\_\_\_, 1984.

1. Last name, first name, and middle initial \_\_\_\_\_

2. Your occupation \_\_\_\_\_

3. Social Security number \_\_\_\_\_

4. Spouse's social security number \_\_\_\_\_

5. To this fund? (Check one)  
a. For the Federal Reserve Bank of New York \_\_\_\_\_  
b. For the Federal Reserve Bank of St. Louis \_\_\_\_\_  
c. For the Federal Reserve Bank of Atlanta \_\_\_\_\_  
d. For the Federal Reserve Bank of Chicago \_\_\_\_\_  
e. For the Federal Reserve Bank of Minneapolis \_\_\_\_\_  
f. For the Federal Reserve Bank of Cleveland \_\_\_\_\_  
g. For the Federal Reserve Bank of Dallas \_\_\_\_\_  
h. For the Federal Reserve Bank of Kansas City \_\_\_\_\_  
i. For the Federal Reserve Bank of Omaha \_\_\_\_\_  
j. For the Federal Reserve Bank of Phoenix \_\_\_\_\_  
k. For the Federal Reserve Bank of San Francisco \_\_\_\_\_  
l. For the Federal Reserve Bank of Seattle \_\_\_\_\_  
m. For the Federal Reserve Bank of St. Paul \_\_\_\_\_  
n. For the Federal Reserve Bank of San Diego \_\_\_\_\_  
o. For the Federal Reserve Bank of San Antonio \_\_\_\_\_  
p. For the Federal Reserve Bank of Fort Worth \_\_\_\_\_  
q. For the Federal Reserve Bank of Houston \_\_\_\_\_  
r. For the Federal Reserve Bank of New Orleans \_\_\_\_\_  
s. For the Federal Reserve Bank of Miami \_\_\_\_\_  
t. For the Federal Reserve Bank of Jacksonville \_\_\_\_\_  
u. For the Federal Reserve Bank of Tampa \_\_\_\_\_  
v. For the Federal Reserve Bank of Orlando \_\_\_\_\_  
w. For the Federal Reserve Bank of Fort Lauderdale \_\_\_\_\_  
x. For the Federal Reserve Bank of Miami Beach \_\_\_\_\_  
y. For the Federal Reserve Bank of West Palm Beach \_\_\_\_\_  
z. For the Federal Reserve Bank of Boca Raton \_\_\_\_\_

## Frade's DELI

**CATERING for ALL OCCASIONS**

**BEST VET!** **SPECIAL!**

**HOME BAKED TURKEY BREAST** \$1.69 1/2 lb.

**LEAN DOMESTIC BOILED HAM** \$2.19 full lb.

**SUPER BUY** Pecorino Romano Grated Cheese \$3.49 lb.

**Extra Large EGGS** 79¢ doz.

**FINLANDIA SWISS CHEESE** \$1.69 1/2 lb.


**HOME MADE SALADS** **BIG VALUE!**

**HOME COOKING** **SAVE BIG!**

**A Fine Selection of Columbian Coffee Beans Freshly Ground**

**\*FREE DELIVERY Service**

**327 Union Ave. Belleville • 759-3509**



## St. PATRICK'S DAY DANCE

**Saturday, March 16 9:00 PM**  
**Nutley Savings and Loan Community Room**  
**371 Franklin Ave.**

**Sponsored by A NEW BEGINNING**

- Admission \$5.00
- Snacks and Beverages
- DJ Music by Aerodynamics (Singles 29-49)

**For more information call 661-3357**

**UPCOMING EVENTS**  
April 12 Spring Fling Dance

# Social News in the Tri-Town Area

## Lynn Strachan to wed Neil Johnson this fall

Mr. and Mrs. Bryce Strachan of Nutley announce the engagement of their daughter, Lynn A. to Neil G. Johnson, son of Mrs. Jeanne Johnson of Elmwood Park and the late Mr. Milton Johnson.

Miss Strachan, a graduate of Nutley High School, is head teller

at Valley National Bank, Clifton. Mr. Johnson, an alumnus of Elmwood Park Memorial High School, is a tool and die maker with General Automotive Corp., Carlstadt.

A September wedding is planned.



Lynn Strachan — Neil Johnson

## Brookdale Woman's Club celebrates 46 years March 6

Brookdale Woman's Club will hold its 46th birthday luncheon noon March 6 at Glen Ridge Country Club.

Reservations must be made by today. Call Marion Davidson at 338-9205 or Bea Wiech at 338-8586.

Esther Hendrie of Glen Ridge will present readings entitled "Bits and Pieces." A graduate of Emerson College, Boston, she attended Yale School of Drama, has been an actress, monologist, teacher of drama and effective speaking and has performed on

radio and television. Retired as a speech consultant at Montclair Kimberly Academy, she is directress of a reader's theatre group at Christ Episcopal Church, Bloomfield-Glen Ridge.

## Ascension church rummage sale set for next week

The Church of the Ascension, Berkeley Avenue and Montgomery Street, Bloomfield, will hold its semi-annual rummage sale 9 a.m. to 5 p.m. March 4 and 9 a.m. to noon March 5.

Used clothing, household items, small furniture, pictures, jewelry and general bric-a-brac will be on sale.



Mr. and Mrs. Michael Iversen — nee Carole LoCurcio

## Ifversen-LoCurcio nuptials performed

Carole LoCurcio and Michael Iversen exchanged wedding vows Sept. 29 at Holy Family Church, Nutley. The Rev. Francis Blake performed the ceremony. A reception followed at North Jersey Country Club, Wayne.

Honor attendants were Sue Lania and Jeffrey Bell.

The couple honeymooned in St. Thomas and have made their home in Nutley.

## Linda Compagnone engaged to marry Steven J. Kalucki

Mr. and Mrs. Arthur T. Compagnone of North Andover, Mass. announce the engagement of their daughter, Linda J. to Steven J. Kalucki, son of Stephen C. Kalucki of Nutley and the late Mrs. Josephine Kalucki.

Miss Compagnone, a graduate of North Andover High School and Colby-Sawyer College, is with Avco Systems, Wilmington, Mass.

Mr. Kalucki, an alumnus of Nutley High School and cum laude graduate of Northeastern Univ., is an electrical engineer with Avco.

A June 1986 wedding is planned.



Linda Compagnone

## Lincoln School sponsors sock hop March 9 at Elks

Lincoln School PTA will sponsor its annual sock hop 8 p.m. March 9 at Nutley Elks Lodge, 242 Chestnut St. For tickets, call Eva at 661-4325.

Included in the \$15 per person donation is a hot and cold buffet, beer, soda, and music by Johnny the D.J. The event will feature dancing, hula hoops and limbo.

## Loretta Lindorff wed to William J. Henry

Loretta Lindorff, daughter of Mr. and Mrs. George Lindorff of Piscataway, became the bride Feb. 16 of William J. Henry, son of Alice M. Henry of Bloomfield and the late Mr. William C. Henry.

The Rev. Bernard C. Schlegel, pastor of St. Columba's Church, Newark, performed the ceremony in Sacred Heart Church, Bloomfield. A reception followed at Friar Tuck Inn, Cedar Grove.

Escorted by her father, the bride wore a satin gown accented in lace and fashioned with a beaded sweetheart neckline. A matching hat held her veil and she carried pink and white cymbidiums.

Patricia S. Bunker of North Arlington was matron of honor in a midnight blue satin gown with velvet jacket and matching hat. Rebecca A. Henry of Glen Ridge, niece of the groom, was flower girl in a midnight blue velvet dress. She wore a crown of babies breath and carried a basket of pink rosebuds.

Peter E. Henry of Glen Ridge served his brother as best man.

## Fish, chips dinner Saturday evening at Park Methodist

The Park Tandems will hold their 28th annual fish and chips dinner 5 to 7 p.m. Saturday at Park Methodist Church, 12 Park St., Bloomfield.

Tickets, available at the door, are \$6 for adults, \$3 for children.

## Central High School class of 1940 seeks classmates for reunion

Central High School, Newark, class of June 1940 is seeking classmates for a 45th reunion. For information call Erma Mastro 667-4430.

Ushering were George Lindorff of Kearny and Thomas Lindorff of Piscataway, brothers of the bride. The groom's nephew, Joshua A. Henry of Glen Ridge was ringbearer.

Mrs. Lindorff chose a pink chiffon pleated gown and had a corsage of pink and white rosebuds. The groom's mother, in a bone wool dress with beige lace sleeves, wore a lavender orchid.

Mrs. Henry, a graduate of Jersey City State College, is with R.C.A., Lyndhurst.

Mr. Henry, an alumnus of Bloomfield College, is with C. Lummus Co., Bloomfield.

The couple honeymooned in Florida and have made their home in Kearny.

## DAR chapter at Civic Center

Major Joseph Bloomfield Chapter, National Society Daughters of the American Revolution will meet 1 p.m. March 4 at the Civic Center. Fred Branch from the Bloomfield Public Library will show slides, "Circle of the Sun," the story of the sun dance of Blood Indians of Alberta.

Ruth Cavallaro, chapter regent, will discuss plans to attend Awards Day March 19 at Rutgers University and the 93rd annual state conference March 26 and 27 at Hyatt Regency, Princeton. Hostesses will be Dorothy McCormick and Ethel Moudie.

The Evening Group of the chapter will meet 8 p.m. March 7 at the home of Bessmyr Soemer.

A program, "Toys in the New Hampshire Attic," will be presented by New Jersey State Correspondent Doerent Mrs. Philip Ror of Morristown. Members should bring toy treasures from their past. Loyola P. Vuolo, vice regent and Evening Group chairman will preside.

## MEYERS KIELBS BAKERIES

### Retail Baker's Week Giveaway

Come celebrate with us the week of Feb. 25-March 3rd. Stop in any of our 3 locations for a chance to win \$5 worth of our delicious baked goods each day of Retail Baker's Week. Daily drawing at 7 pm at each location.

We believe in quality for your family — We bake with all natural ingredients, never any preservatives added.

Stop By and Get To Know Us

**NATIONAL RETAIL BAKERS WEEK**  
FEBRUARY 25-MARCH 3, 1985

ENJOY

**oven fresh**



BAKERY FOODS

**MEYERS KIELBS BAKERIES**

227 FRANKLIN AVE. • NUTLEY • 667-8587

382 WASHINGTON AVE  
BELLEVILLE • 759 1673

919 FRANKLIN AVE  
NEWARK • 482 0685

### Trivia Fans

**BET YOU DIDN'T KNOW**



Lou Luzzi

Brought to you  
By Bigelow Motors  
Chrysler Plymouth

### Questions:

1. What body of water does the Rhine River empty into?
2. What two months are named for men?
3. What New York City Street is named for a barrier that once kept Indians at bay?
4. What movie actress, who was known as The Girl?
5. Which eye did Moshe Dayan wear a patch over?
6. What organ gave its word hysterical?
7. Who was Elvis Presley's manager?
8. What is a chigger in Brazil?
9. What line divides a circle into two semicircles?
10. What color is the bullseye on an official archery target?

- Answers:  
1. The Mediterranean Sea  
2. July and August  
3. Wall Street  
4. Clara Bow  
5. The left  
6. The uterus  
7. Colonel Tom Parker  
8. A spectator  
9. The Amazon  
10. Yellow

**Bigelow Motors**  
Chrysler Plymouth  
50 Washington Ave.  
Belleville 759-4220

## BACK PAIN NECK PAIN IT COULD BE PINCHED NERVES

### Pinched Nerves May Result In:

- HEADACHES
- LEG PAIN
- DIZZINESS
- NUMBNESS
- SHOULDER PAIN

WHY SUFFER NEEDLESSLY?  
A SPINAL EXAMINATION CAN  
REVEAL IF YOU HAVE PINCHED NERVES

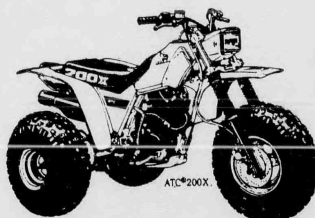
### Most Insurances Provide Coverage

Health (Major Medical 80%\*) Liability (Auto Accident 100%)  
Approved Workman's Compensation (on the job injury 100%)  
\* Most provide coverage with satisfied deductible

**Bloomfield Chiropractic Center**  
858 Joramelon St. Belleville  
759-3600

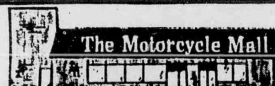
Dr. Gerald Mattia D.C.  
Dr. Susan Guarino D.C.

## HONDA ATC FOLLOW THE LEADER



• 3 and 4 Wheelers

**PRICES START AT \$599 ATC 70**



**165 WASHINGTON AVE.  
BELLEVILLE  
751-4545  
751-7727**





Shapes and Forms

## Nutley Juniors capture first place in state-wide music competition

The Nutley Junior Woman's Club "Shapes and Forms" music group won first place in the state-wide music competition Feb. 3 at Wayne Hills High School.

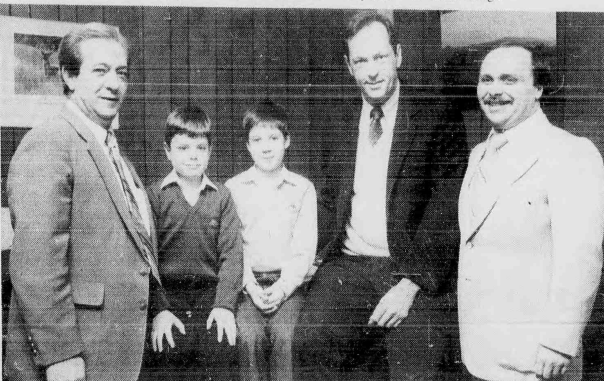
Carrying out the theme, "Money Makes the World Go Round," the juniors sang "Pennies from Heaven," "Money,"

"Hey, Big Spender" and "If My Friends Could See Me Now."

Members of the winning group were Barbara Heiser, Leslie Taylor, Anita Angotti, Theresa Beleskie, Marcia Wasvary, Karen Weil, Marie Vicchiarella and Kathy Bimbi. Jan Richlan, Reanne Mauriello and Maryellen

Matarazzo assisted with lighting and curtain.

The juniors will be taking their show to senior citizens groups in town as well as to the ladies auxiliary. They will also be performing at the New Jersey State Federation of Woman's Clubs' annual convention May 17 to 19 at Great Gorge.



Senator and friends

Senator Bill Bradley, Essex County's honorary chairman for Children's Dental Health Month, encourages John and Vincent Baldi of Belleville to listen to the advice of their dentist. Also in the picture, Dr. Ralph Attanasio of Nutley, president of the Essex County Dental Society and Dr. Vincent Castellano of Bloomfield, the Dental Society's chairman of the countywide program.

## Chinese auction set March 8 at Immaculate Conception

Felician sisters and the freshman class of Immaculate Conception High School, 258 South Main St., Lodi, will hold a Chinese auction 6:30 p.m. March 8 in the school cafeteria, adjacent to the tennis courts on South Main Street.

For information call 773-2400. A donation of \$1.50 at the door will include door prizes and 25 table prize tickets. Food baskets, dark horse, sweepstakes and table premiums will be featured. Refreshments will be sold.

## St. Valentine's society sponsoring Chinese auction

The Altar and Rosary Society of St. Valentine's Church, Bloomfield, will hold a Chinese auction 7:30 p.m. March 8 in the lower level of the church. For tickets call Anne Reardon 748-9484.

Tickets are \$3. Refreshments will be served. The affair is open to the public.

## YES!

We are happy to print your wedding, engagement, new arrival, club news etc. in the tri-town social section of this paper. Forms are available. Call Helen Maguire at 667-2100 for help or information.

## Atlantic City bus will leave next Thursday

The Woman's Club of Belleville will sponsor a bus trip to Atlantic City March 5. Transportation is \$7 and patrons will receive a ticket for a free \$7 lunch. For tickets, call 759-6852 or 759-8759.

The bus will leave the Belleville Library, Washington Avenue at 9 a.m. for the Atlantic Casino and depart Atlantic City at 5:30 p.m. Tickets must be purchased in advance. Reservations limited.

## Multiple mothers rap session tonight at Holy Trinity

Essex County Mothers of Multiples will meet 8 tonight at Holy Trinity Church, 307 Main St., West Orange.

The evening will include a "rap session" with participants dividing into groups according to the age of their children.

The club is a member of the National Organization of the Mothers of Twins Club. Interested parties are invited. For information, call Mary Lee at 667-1334.

## Art exhibition March 1 to 22 at Civic Center

Bloomfield Art League's members' exhibition will be held March 1 through March 22 at Bloomfield Civic Center, 84 Broad St., galleries 1 and 2.

A reception 2:30 March 3 will include a watercolor demonstration by Anthony Ventura.

# Stork Club

Laura C. Bottazzi

A third child, a daughter, Laura Christine, was born to Mr. and Mrs. Frank Bottazzi of Nutley Dec. 28 at Clara Maass Medical Center. Birth weight was seven pounds, eight ounces. She joins Anthony, four and Michael, one and a half.

Mrs. Bottazzi is the former Mary Pancaro, daughter of Mr. and Mrs. Natale Pancaro of Nutley. Mr. Bottazzi, son of Mr. and Mrs. Frank Bottazzi of Bloomfield, is a chemical operator with Cardolite.

Jeffrey L. Kepeck

A second child, a son, Jeffrey Lawrence, was born to Mr. and Mrs. Walter Kepeck of Belleville Feb. 8 at Clara Maass Medical Center. Birth weight was 7 pounds, 10 ounces. He joins Bryan Walter, 2½.

Mrs. Kepeck is the former April Winters, daughter of Marion Winters-Dean of Garwood. Mr. Kepeck, son of Mildred Kepeck of Belleville is an electronic technician with Lytle Co., Summit.

Brittany A. Malfitano

A first child, a daughter, Brittany Ann was born to Mr. and Mrs. Louis Malfitano of Nutley Feb. 8 at Clara Maass Medical Center. Birth weight was 7 pounds, 14 ounces.

Mrs. Malfitano is the former Wanda Barletti. Mr. Malfitano, son of Mr. and Mrs. Enrico Malfitano of Nutley, is a contractor with Luciano Construction, Nutley.

Christopher Murano

A second child, a son, Christopher, was born to Mr. and Mrs. Frank Murano of Nutley Jan. 31 at St. Barnabas Medical Center. Birth weight was eight pounds, one ounce. He joins Frank Jr., two.

Mrs. Murano is the former Darlene Mondo, daughter of Joyce Mondo of Nutley and Dominick Mondo of Bloomfield. Mr. Murano is the son of Mr. and Mrs. Anthony Murano of Bloomfield.

Joseph Molnar

A first child, a son, Joseph, was born to Mr. and Mrs. Greg Molnar of Lyndhurst Feb. 1 at Clara Maass Medical Center. Birth weight was seven pounds, nine ounces.

Mrs. Molnar is the former Barbara DeIlippis, daughter of Mr. and Mrs. Mario DeIlippis of Belleville. She is an executive secretary with N.J. Bell Telephone Co. Mr. Molnar, son of Gertrude Molnar of Lyndhurst and the late Mr. Joseph Molnar, is self-employed as Custom Radiators.



Twirler

Kerry Ferrara, 7, a second grader at Washington School, recently competed in a New Jersey Twirling Association contest in Bloomfield. She won first place in baton solo, third place in a marching category and won the title of Winter Princess 1985. Kerry studies with Lucille Muller and is a member of Nutley Amvets Patriots.

# Social News

## Joseph Trabucco on dean's list at Taylor Institute

Joseph Trabucco, son of Mr. and Mrs. Nicholas Trabucco and a 1984 graduate of Belleville High School has been named to the dean's list for the fall semester at Taylor Institute of Bloomfield College where he is majoring in computer technology.



### The Choice of the People

7 Days  
24 Hours  
Delicious  
Salaad Bar!  
Italian  
Specialties!  
Steaks & Chops

All baking done on premises • Homemade pastries  
Children's Menu Available  
Special Breakfast Menu: 6-11 a.m.  
Daily Businessman's Lunch: 11 a.m.-2 p.m. Saled Bar Open 11 a.m.-10 p.m.  
ALA CARTE and COMPLETE DINNER MENU

## We're Always Open

# WILLIE'S

## DINER-RESTAURANT

9 State St., Bloomfield Call 748-7410

TEL-AIR has been *selling, installing & servicing* CAR PHONES 16 years out of 23 years in business!

TEL-AIR "Cellular-One Stop" 27 Park Ave. Nutley 667-4453

COME IN and try out any one of 3 models

ONLY \$68/mo.  
Including Installation  
(3 yr. lease)

AT&T

## CAMEO OPTICS

380 Main St., Belleville  
Grand Union Shopping Center  
751-4600

Where more Americans find a bigger refund

## H&R BLOCK

Found Mabel and Howard Hajek \$2447!

We can't promise everyone this, but in a recent survey of customers who got refunds, 3 out of 4 believe they got bigger refunds than if they did their own taxes. 3 out of 4!

### What can we find for you?

155 Franklin Ave., Nutley 235-1000  
125 Washington Ave., Belleville 751-3836  
18 Broad St., Bloomfield 743-0898

Open 9 a.m.-9 p.m. weekdays, 9-5 Sat. & Sun.  
Assignments: Variable • MasterCard & Visa Accepted

HOUSE CALLS AVAILABLE

## Remcor Realty

"LICENSED REAL ESTATE BROKER"

## & Rem Travel

announce the opening of their offices at

64 Franklin St.  
Belleville

- Commercial
- Industrial

Residential Sales & Appraisal Services

450-0335  
759-2686  
Member M.L.S.



# Belleville Business Review

By Howie Halpern

The Belleville Chamber of Commerce has solved a long standing dilemma. Until this day the Chamber was without a logo. Under the suggestion and direction of board member Rita Troise, a contest was started to find the best logo suitable for decals and letterhead. Participants in the contest were students of the middle school and high school. A winner has been selected by the Chamber's Board of Directors. With so many good entries to choose from, the choice was most difficult.

Congratulations to Thomas J. Lupo, a 17 year old Belleville High School senior, the undisputed winner. Tom will be presented a \$100 U.S. Savings Bond for his effort. The presentation will be made on OBC-TV at a later date soon to be announced. Special thanks to all the students who participated and the teachers that supervised this project.

The Belleville Chamber of Commerce in its continuing effort to promote business and industry in Belleville salutes the Vac-U-Max Corp. Located at 37 Rutgers St., Vac-U-Max is a giant as suppliers of pneumatic conveying systems and originators of air operated industrial vacuum cleaning equipment. Established in 1955, the company currently employs 70 people.

Vac-U-Max distributes conveying systems to plants throughout the country. Pneumatic conveyors are specially designed to transfer in-plant materials such as powders, granules, pellets, raw materials, bottle caps, tennis balls, wine bottle and corks. They supply these systems to large companies such as Nabisco, Sunshine, Hoffmann La Roche, Ciba Geigy, Dupont and Pfizer. Vac-U-Max also produces a unique industrial vacuum cleaner that derives its power from air rather than electricity. They are powerful enough to pick-up oil from large oil sumps and to remove chips or any other bulk or liquid matter.

According to Marketing Director John Andrew, these vacuums have three times the power of conventional electric apparatus. At a recent national company sales meeting, 48 agency representatives from 23 states met to discuss the latest marketing strategies. Vac-U-Max is a national distributor and a world wide manufacturer. Hats off to company President Steve Pendleton, proving once again, Belleville industry is a leader among giants.

"I went to NJIT and Rutgers University to become an architect." But Debbie Sanchez, a pretty 26-year-old brunette, changed her mind. Judging by the expertise displayed in her present profession, I'd say she made the right choice. Debbie has brightened Washington and Belleville avenues with a unique two dimensional sign hanging from her establishment at 145 Washington Ave. Deborah Sanchez is the president of her own company and newest member of the Belleville Chamber of Commerce. Her business is known as Graphic Design by Sign Force. She designs signs in almost any material unique to one's business. Whether its neon, plastic, two or three dimensional or any special effects mode, Debbie can design it, produce it, and hang it. This attractive young lady is certainly not conventional. Unique signs are her trade mark.



Thomas J. Lupo

You've heard us on WCBS and WINS Radio

**5 minutes** via Rte. 21 Belleville Nutley

**YOU** can get the great deals on

**HONDA PONTIAC or VOLVO**

that have brought hundreds of people from ALL OVER the Tri-State area

**City Motors**  
River Drive, at Rte. 21, Passaic Park  
**777-1600**

## Provident Savings names three bank officers

Karen Annunziato, Katherine Gabry and Carlita Malcomb have been named bank officers at The Provident Savings Bank.

Annunziato and Malcomb were named assistant secretaries and Gabry was named assistant treasurer.

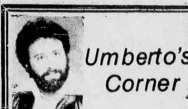
Annunziato has served in various office capacities since joining Provident in 1976. In

1981, she was named administrative assistant to the branch manager at the Dumont office. She attended the American Institute of Banking.

Malcomb joined Provident in 1979 as a teller and was supervisor-in-charge of the Burlington office where she is presently assigned. She is a graduate of Rancocas Valley

Regional High School.

Gabry joined Provident in 1981 as a teller and is now assigned to The Provident Employee Development Department. Gabry holds a B.A. degree in journalism from Pennsylvania State University and graduated from The American Institute of Banking with a degree in foundations of banking.



Umberto's Corner

Dear Umberto,

My husband comb bald so he combs the hair from the cranium to the front. I told him he looks funny and he tells me to "Keep quiet, you're the one that made me nervous which made me gain weight and lose my hair."

Umberto, two years ago he gained a lot of weight and then he went on his own diet. He lost weight after a year or more. Can you lose your hair by getting nervous or by dieting? Also, are there other ways to comb his hair? Please, answer.

The Lady with the Bald Husband

Dear Lady?

You can lose hair over getting nervous, but it will grow back. If you go on your own diet without your physician's advice, you can lose your hair faster and it will not grow back, especially if baldness runs in the family.

Yes, there is a way to comb his hair differently. He can let his hair grow longer on one side of his head and comb it to the other side. I assure you, it will not look funny.

To The Belleville Italian Americans I thank you for the delicious fruit basket you sent.

Yours, Umberto

**UMBERTO OF HAIRIES**  
547 New College & College  
Washington  
100 Union Turnpike  
Belleville, N.J.  
Phone 777-1600  
We are OPEN SUNDAYS

**GANTNER'S INC.**  
160 Franklin Ave., Nutley  
Hardware - Housewares - Home Furnishings - Paint - Plumbing - Glass - Electrical Supplies - Childrens Clothes

**PAINT SALE**  
Dutch Boy Latex Flat Wall Paint \$8.99 gal.  
Dutch Boy Latex Semi Gloss \$12.99 gal.  
Frisco Flat Latex Wall Paint \$8.99 gal.  
Frisco Semi Gloss \$12.49 gal.  
Krylon Spray Enamels - reg. \$2.99 \$1.99

**LOWER LEVEL SALE**  
All Towels & Sheets 20% Off

50% off Clearance On All Fall & Winter Clothes for Children

All New Spring & Summer Children Clothes 20% Off

Mon. & Fri. 9:00 a.m. to 8:15 p.m.  
Tues., Wed., Thurs. & Sat. 9:00 a.m. to 5:45 p.m.

667-6622

**GOLD FEVER SALE**  
UP TO  
**SAVE 50%**  
ON OUR

14K Gold & Diamond in store special items

**SAVE 30%**  
on the remainder of our entire HUGE inventory of Fine Diamonds, Watches & 14K Gold Jewelry

**ARLINGTON JEWELERS**

Main Store: 36 Ridge Rd. North Arlington • 998-5036  
Branch Store: 261 Franklin Ave. Nutley, N.J. • 661-1558

Closed Tuesdays

Store Hrs.: Mon., Wed. & Sat. 10-6. Thurs. & Fri. 10-8. Closed Tues.

## DR. MICHAEL G. GIULIANO

Announces the relocation of his office for General Family Medicine Complete Medical Care of Infants Adolescents and Adults

at  
**622 Franklin Avenue  
Nutley, N.J. 07110**

Hours By Appointment (201) 667-8493 House Calls Available Open Saturdays

## GARY'S TELEVISION

Your "Home Video Entertainment Center"  
One of the Largest Video Libraries in the Area

Special

**JVC T-120** \$5.99  
Blank Tapes

"RENT A MOVIE TONITE"

Open Mon. - Fri. 9 to 8 Sat. 9 to 4

388 Washington Ave.  
Belleville 759-2170



## LMV LEASING, INC.

A XEROX Financial Services Company

LMV is proud to announce the opening of its office in Whippany. We are committed to serve the vehicle needs of New Jersey.

LMV is one of the nation's largest Vehicle Leasing and Fleet Management Companies. LMV supplies all makes of vehicles for businesses throughout the U.S.

Contact **James W. Yuppa**, District Sales Mgr.

**LMV LEASING, INC.**

110 Jefferson Rd. • Whippany, NJ 07981  
201/884-9191



James W. Yuppa



CHANNEL  
36  
CLASSIFIEDS

## The Perfect Place to Advertise!

### Channel 36 Classified

- Can be seen over 500 times per week.
- Are watched by people who are looking to buy.
- Are cost effective and economical.

### You can advertise on Channel 36

COMMERCIAL BUSINESS RATE: \$50.00 per week per page (8 lines).

### Order Your Channel 36 Classified today!

	1	2	3	4	5	6	7	8	9	10	11	12	13	14	15	16	17	18	19	20	21	22	23	24	25	26	27	28	29	30	31	32
1																																
2																																
3																																
4																																
5																																
6																																
7																																
8																																

Send check or money order with your advertisement to:

### OBC - TV

Channel 36 Classifieds  
800 Bloomfield Ave.  
Nutley, N.J.

#### REQUIREMENTS:

Each line can have no more than 32 characters (spaces and punctuation included)

# Religious viewpoint: make best of misfortunes

By Rev. Robert Paul

The story, the forming of pearls is old. A grain of sand or some sharp cutting substance becomes lodged in the body of the oyster. It is not only irritating, but painful. Since it cannot be expelled, the most precious substance that the oyster produces is deposited around the irritating, foreign body. This process continues until the source of the irritation becomes a beautiful pearl. Without the pain and suffering, there would be no pearl. With little irritation, there would

be only a tiny one. However, with much suffering, there is a large, luminous pearl.

If our lives flowed along smoothly and easily, we might be sweet and gentle creatures, but without much strength of character. And with no pearls. Overcoming hardships, withstanding temptation and neutralizing irritation and suffering are what make lives strong and beautiful. Only trees that withstand storms put down deep roots and develop strong trunks and limbs.

Why does God permit suffering in the world? Perhaps it is the only way to develop strength and to make pearls. Maybe, when human beings have learned how to overcome suffering, they will be finer creatures.

We have all been taught to make the best of our misfortunes. Not so many of us, however, have learned to make the most of them. Here and there, a brave soul capitalizes on his misfortunes, and becomes something better, finer and greater than he would have been without the catastrophe

which, in the beginning, he thought would overwhelm him. He learned how to make a great pearl that changed his whole life.

Many have brought great strength out of their trials. Do you know that John Bunyan wrote "Pilgrim's Progress" while in jail and William Penn "The Fruits of Solitude" while in a filthy prison?

What a pearl Jesus Christ made of the cross! An instrument of torture has become the hope of the world! See what a pearl God made from the irritation of man's sin and ungratefulness when He sent the Lord Jesus Christ to redeem us. Ephesians 1:7.

Despite all feelings, believe God loves you and Jesus Christ died and arose again for your salvation. The just shall live by faith, and you shall have peace with God. Romans 5:1.

## Community-based groups providing library lectures

Representatives of several community-based agencies have recently provided lectures and discussions at the Belleville Public Library.

Glen Hester, author of *Child of Rage*, a consultant with the Division of Youth and Family Services, recently discussed his book and the status of foster care in New Jersey, while Lynn Alder discussed the services of the state Division of Youth and Family Services.

In 1983, more than 4,600 children were placed in foster homes, although about 1,000 new foster homes are needed each year, and foster homes are needed now for brother-and-sister groups, infants, teenagers, and unwed mothers and their children.

Alice Ricci, director of the Community Mental Health Services for Belleville, Bloomfield,

and Nutley, recently discussed the services and programs of her agency. The organization provides individual, group, and family therapy and parent-child and marital counseling. It also provides psychiatric evaluations and medical monitoring, a crisis worker to respond to psychiatric emergencies and crisis situations, supportive services for those making transitions from psychiatric hospitalization back to the community, and work with schools and other social service agencies to assist in the prevention and early detection of emotional difficulties and the promotion of mental health.

Tom Cuttita of the Family Service Bureau recently conducted a parenting discussion with the preschool mothers. The bureau is a counseling agency for people with personal, family, and emotional problems.

Those interested in hearing any of these people speak should call the library at 759-9200 for information.

## Belleville Recreation Department Baseball/Softball Applications

The Belleville Recreation Department is proud to announce that applications for all Peanut, Junior, Senior/Intermediate baseball and softball programs are available in all public and parochial schools and at the Recreation House this week.

Applications for Peanut and Junior League baseball for children ages eight through twelve must be completely filled out and returned to the Rec. House by March 15, 1985. Children who are eight years old before August 1, 1985 and who will not be 13 before July 31, 1985 are eligible

for organized baseball in either the peanut or junior leagues.

Applications for girls softball and senior/intermediate baseball are also available. Girls eight years old on August 1, 1985 and whose 10th birthday falls after July 31, 1985 are eligible for Pee Wee League softball; girls 10 years old on August 1, 1985 and whose 13th birthday falls after July 31, 1985 are eligible for Pigtail League Softball, and girls 13 years old on August 1, 1985 and whose 16th birthday falls after July 31, 1985 are eligible for Junior League Softball. High School Freshmen or J.V. team players, or Suburban League team players (7th, 8th grade) are not eligible, however. All applications must be returned to the Rec. House with birth certificates by Friday, March 15, 1985.

Boys ages 13 through 15 on July 31, 1985 are eligible for Intermediate/Senior League baseball. All applications must be returned with birth certificates to the Rec. House by March 15, 1985. Boys who are playing organized High School ball are not eligible, however.

In all cases, the applications must be completed in full and signed by a parent, and all returning players must re-apply. Applica-

tions accepted after the March 15 deadline will be considered late and will be treated accordingly.

The Rec. House (407 Joralemon Street) hours for registration are Monday - Friday 8:30 a.m. - 12 noon and 1:00 - 4:00 p.m. The office will also be open one night a week for registration - call 450-3422 for time and day. All children attending required practices will play in every game. Our leagues stress sportsmanship, basic skills and fun.

High School boys who are not involved in interscholastic baseball nor the recreation baseball leagues and who would be interested in playing Senior League Softball are urged to contact the Recreation Department for more information.

## Guidance staff extending hours

The Belleville High School Guidance Department will open over the dinner hour until 7 p.m. according to the following schedule:

Miss Candiloro, Miss Herelick; March 6: Mr. Esposito, Mr. Kennedy; March 13: Mr. Cafone, Dr. Benninger; March 20: all counselors; March 27: Miss Williamson, Mr. Kennedy.



# Winter "CLEARANCE"

## PRICES START AT \$419

- Honda quality throughout.
- Rugged, dependable Honda 5 HP 4-stroke engine provides greater snow blowing ability.
- Honda Automatic Decompression easy start system makes engine starting quick and reliable.
- Self-propelled for easy maneuverability even through hard-packed snow.
- Choice of wheel or track drive system.
- 220" adjustable discharge chute allows snow throwing in almost any direction.

- Honda quality throughout.
- Rugged, dependable Honda 3.5 HP 4-stroke engine has plenty of power.
- Semi-self-propelled.
- 220" adjustable discharge chute allows snow throwing in almost any direction.
- Adjustable snow deflector throws 3' to 20'.



**HONDA**

**Power Equipment**

**165 WASHINGTON AVE. BELLEVILLE**

**751-4545**

**751-7727**



# Start retiring today.

## Build tomorrow's retirement fortune with a tax-sheltered IRA Account at Spencer Savings now!

It's never too early, or too late, to start planning for retirement. And right now the incentives are the best ever!

Today, everyone who works, even those covered by another pension plan, can take advantage of our new Individual Retirement Account (IRA). It makes good sense and lots of money.

Here's why.

Every dollar you contribute to your IRA is tax-deductible, right off the top. Plus, all the interest you earn over the years is tax-sheltered until you retire

(when you should be in a much lower tax bracket). So, you save both ways.

Married working couples can now contribute up to \$4,000 of yearly income. Couples with one working spouse can put away up to \$2,250. And single individuals can contribute a maximum of \$2,000 each year. All tax-deductible. All tax-deferred.

The sooner you start your IRA, the more money you'll have at retirement. It's that simple. Choose the plan that's best for you and start retiring today. You'll enjoy a much richer tomorrow!

## VARIABLE RATE IRA PLAN

- 18-Month Certificate
- \$50 Minimum Opening Deposit
- Interest rate changes monthly
- Interest is Compounded Continuously and Credited Monthly
- Additional Deposits of \$20 or more may be made at any time during the term

CALL OR STOP IN FOR CURRENT RATE QUOTES AND INFORMATION!

## FIXED RATE IRA PLAN

- 2 1/2-Year Certificate
- \$500 Minimum Opening Deposit
- Interest rate remains fixed for term of Certificate
- Interest is Compounded Continuously and Credited Quarterly

Start Your IRA today — Retire Rich tomorrow!

(Federal regulations permit withdrawals as early as age 59½. Premature withdrawals may result in a penalty and loss of tax-deferred status.)

## WE DO EXPERT

- JEWELRY & WATCH REPAIRS
- PEARL & BEAD RESTRIING
- CUSTOM JEWELRY DESIGNING
- DIAMOND & JEWELRY APPRAISALS
- DIAMOND & STONE REMOUNTING
- EAR PIERCING BY APPOINTMENT

WATCH BATTERY REPLACEMENT (WHILE YOU WAIT IF POSSIBLE)

All at low, low sensible prices

JEWELRY REPAIRS DONE WHILE YOU WAIT IF POSSIBLE

Jeweler on premises

**ARLINGTON JEWELERS**

Main Store: 36 Ridge Rd. North Arlington • 998-5306

Branch Store: 261 Franklin Ave. Nutley • 661-1558

Store hours: Mon., Wed. & Sat. 10-6; Thurs. & Fri. 10-8; Closed Tuesdays

# VIVA LA NAILS

- Manicures
- Pedicures
- Tips & Wraps
- Cosmetics
- Cosmetic Makeovers
- Painless Hair Removal

5 James St. Bloomfield, N.J. (corner of Broad St.)

Call for Appointment Phone 429-2994

## Register Now!

# GROUP ICE SKATING LESSONS

FOR EVERY AGE AND ABILITY LEVEL


SESSIONS RUN FOR 6 WEEKS - WEEKEND CLASSES START MARCH 9

WEEKDAY CLASSES START MARCH 4

Convenient times available. We offer the most comprehensive group instruction program in the Metropolitan Area!

Call for application form and information: (201) 785-1111

Advanced Skaters — Intermediate Skaters — Beginners —



**ICE WORLD**

Route 46 at Union Boulevard, TOTOWA, N. J. (Just off Route 80)

# Spencer Savings

and Loan Association

GARFIELD • LODI • WALLINGTON • SADDLE BROOK • CLIFTON • LYNDBURST • BELLEVILLE

PHONE NUMBER FOR ALL OFFICES • 772-6700

Member FSUIC

# Here's just a sample of what you'll find in the New Price Finder for Specials.

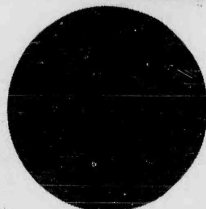
U.S.D.A. Choice - Boneless Beef  
**Chuck Roast**  
**1.57**  
Lb.

Assorted Flavors  
**Grand Union Ice Cream**  
**1.69**  
Half Gal. Cont.

Holly Farms - Grade 'A' Fresh  
**Mixed Fryer Parts**  
**49¢**  
Lb.  
2 Breast Quarters with wings, 2 Leg Quarters with backs, 2 wings, 2 necks, 1 stripped back, 5 livers and 2 gizzards.

Frito Lay - Assorted Varieties  
**Ruffles Potato Chips**  
**99¢**  
7-oz. Pkg.

**Grand Union Price Finder for Specials**



Contains All the Specials in the Store.  
Look for the Red Dots on the self.



U.S. No. 1 - Fresh California  
**Iceberg Lettuce**  
**49¢**  
Head

**Super GRAND UNION Coupon**  
Mr. Big Napkins (300), Bath Tissue (6 Rolls) or  
**Mr. Big Paper Towels**  
One Pkg. of 3 Rolls **99¢**  
No Minimum Purchase Required With This Coupon. Good Feb. 24 Thru Mar. 2. Limit One Coupon Per Customer.

**Super GRAND UNION Coupon**  
Regular or Caffeine Free  
**Coke, Tab or Diet Coke**  
One 2-Ltr. Bil. **79¢**  
No Minimum Purchase Required With This Coupon. Good Feb. 24 Thru Mar. 2. Limit One Coupon Per Customer.

Original  
**Aunt Jemima Pancake Mix**  
**79¢**  
2-Lb. Pkg.

All Method Grind Coffee - Regular  
**Chock Full O'Nuts**  
**1.99**  
1-Lb. Can.

## THE BUTCHER BLOCK      PRODUCE      GROCERIES

U.S.D.A. Choice Beef  
**Whole Boneless Beef Rib Eye**  
or Half Untrimmed **3.47**  
Lb.  
Custom cut into steaks and/or roasts.

Gov't Grade 'A' - Frozen  
**Tyson's Cornish Hens**  
**99¢**  
Lb.

Imported from South American  
**Seedless Red Grapes**  
**99¢**  
Lb.

Regular or Thin  
**Mueller's Spaghetti or Elbows**  
**2.100**  
1-Lb. Pkgs.

Fudge Stripes or  
**Keebler Deluxe Grahams**  
**99¢**  
11.5-oz. Pkg.

**Club Steak** **3.97**  
U.S.D.A. Choice - Boneless Beef Lb.  
**Chuck Fillet** **1.89**  
U.S.D.A. Choice - Boneless Beef Lb.  
**Chuck Cubed** **2.29**  
U.S.D.A. Choice - Boneless Beef Steak Lb.  
**Chuck Steak** **1.19**  
U.S.D.A. Choice - Boneless Beef First Cut Lb.  
**Chuck Roast** **1.49**  
U.S.D.A. Choice - Semi-Boneless Beef Lb.

**Fresh Butterballs** **99¢**  
Swift Premium - 10 to 14 Lbs. Lb.  
**Pork Sausage** **1.49**  
Fresh Italian Style - Hot or Sweet Lb.  
**Fresh Pork Butt** **1.29**  
Pork Shoulder Lb.  
**WHOLESALE SAVINGS**  
**Whole Tenderloin** **3.99**  
U.S.D.A. Choice - Boneless Beef Filler Mignon Lb.  
5 to 7 Lbs. Untrimmed Cry-O-Vac Custom Cut.

**Oranges** **10.159**  
California Sweet Eating Navel - 113 Size For 10-oz. Pkg.  
**Brussels Sprouts** **99¢**  
Fresh Tender 10-oz. Pkg.  
**Grapefruit** **4.99**  
Florida - White Large 40 Size For 4-oz. Cont.  
**Romaine Lettuce** **59¢**  
Crisp Fresh Lb.  
**Yellow Onions** **79¢**  
U.S. No. 1 3-Lb. Bag

**Spaghetti Sauce** **1.39**  
Prego - Assorted Varieties 2-Lb. Jar.  
**Tomato Sauce** **6.100**  
Contadina - Quality 8-oz. Cans.  
**Juicy Juice** **89¢**  
100% Juice - Asst. Flavors 1-Qt. 14-oz. Can.  
**Tomato Paste** **3.89**  
Contadina 6-oz. Cans.  
**Syrup** **1.69**  
Aunt Jemima 1-Pt. 8-oz. Btl.  
Reg. - For Pancakes & Waffles.

**Towels Mardi Gras** **59¢**  
Prints Pkg. of 1 Roll.  
**Purina 100** **4.100**  
Cat Food - Assorted Varieties 6-oz. Cans.  
**Salt** **3.89**  
Diamond Crystal Plain or Iodized 1-Lb. 10-oz. Cans.  
**Cheerios Honey Nut** **1.59**  
General Mills - Breakfast Cereal 14-oz. Pkg.  
**Corn** **3.100**  
Regular or No Salt Added 3 For 100¢  
Del Monte - Whole Kernel or Cr. Sty. 8.75-oz. Cans.

**Family Pack Savings**  
SAVE 10¢ ALL ON PACKS OF 3 LBS. OR MORE  
**Pork Chops** **1.49**  
Pkg. contains 7 chops - bone-in.  
Combo - Loin, Rib End & Center Cut Ea. Lb.  
**Chicken** **1.17**  
Holly Farms - Cubed Grade 'A' Fresh 3 Breasts split with Ribs, 3 Drums, 3 Thighs Ea. Lb.  
**Top Chuck Steak** **1.99**  
U.S.D.A. Choice - Boneless Beef Ea. Lb.

**Yogurt Breyers** **2.89**  
Assorted Flavors 6-oz. Cans.  
**Borden's Singles** **1.99**  
American Slices 1-Lb. Pkg.  
**Orange Juice** **2.29**  
Tropicana - Chilled Half Gal. Cont.

**Sour Cream** **99¢**  
Breakstone 1-Lb. Cont.  
**Cream Cheese** **69¢**  
Temple - Whipped 4-oz. Cont.  
**Nestle Iced Tea** **97¢**  
Sugar & Lemon or Sugar Free Half Gal. Cont.

**Broccoli Spears** **59¢**  
Birds Eye - or Cauliflower 10-oz. Pkg.  
**Orange Plus** **98¢**  
Birds Eye Breakfast Drink 12-oz. Can.  
**Ice Milk** **1.99**  
Light n' Lively Sealed - Assorted Flavors Half Gal. Cont.

**HEALTH & BEAUTY**  
**Always Maxi Pads** **3.49**  
Regular or Thin Pkg. of 30.  
**Playtex Tampons** **1.99**  
Regular or Super Absorbent Pkg. of 28.  
**Baby Fresh Wipes** **1.29**  
Scott Cont. of 40.

**THE CORNER DELI**  
IN STORES WITH SERVICE DEL.  
**Sliced Pastrami** **1.49**  
King's Pride - or By The Piece Half Lb.  
**Cooked Ham** **1.79**  
Russer's Little Salt - Water Added Half Lb.  
**Swiss Cheese** **1.89**  
Imported from Switzerland Half Lb.

**GRAND UNION Coupon**  
**25¢ Off**  
With This Coupon And Purchase Of One 1 Gal. Container  
**Caruso Blended Vegetable Oil**  
Coupon Good Feb. 24 Thru Mar. 2. Limit One Coupon Per Customer.

**GRAND UNION Coupon**  
**10¢ Off**  
With This Coupon And Purchase Of One Pkg. of 150 - White or Colors  
**Kleenex Softique Facial Tissues**  
Coupon Good Feb. 24 Thru Mar. 2. Limit One Coupon Per Customer.

**GRAND UNION Coupon**  
**30¢ Off**  
With This Coupon And Purchase Of One 8-oz. Jar - Regular Instant  
**Maxim Freeze Dried Coffee**  
Coupon Good Feb. 24 Thru Mar. 2. Limit One Coupon Per Customer.

**FOR STORE INFORMATION CALL TOLL-FREE 1-800-221-1835**

# GRAND UNION

**MOST GRAND UNIONS ARE OPEN 24 HOURS**  
Check your local Grand Union for store hours.

Prices effective Sunday, Feb. 24 thru Saturday, Mar. 2 at all Grand Union stores in New Jersey, Rockland and Orange Counties. In order to assure a sufficient quantity of sale items for all our customers, we reserve the right to limit sales to 3 packages of any item unless otherwise noted. Not responsible for typographical errors. For store information call toll free, 1-800-221-1835.

Main Street, Belleville - 24 hrs. daily: Sunday, 8 a.m. to 9 p.m.; 505 Allwood Rd., Clifton - 7 a.m. to 11 p.m.  
Monday thru Sat.: 8 a.m. to 7 p.m. Sunday; 710 Bloomfield Ave., Glen Ridge - 24 hrs. daily: Sunday, 8 a.m. to 7 p.m.



# Belleville Times SPORTS



Pat on the back

Bucanier wrestling team gets ready for district match.

## bucs end tough 2-22 season with 68-38 loss to Kennedy

By Michael Lamberti  
Ending the season in a less than spectacular manner, the Belleville boys basketball team was shelved by conference power Paterson Kennedy, 68-38, at Paterson last Tuesday.

The Buccaniers ended the campaign with a 2-22 record. Next week, The Times will wrap-up the 1984-85 season for Rocco Colucci and his squad.

When you play a team of Paterson Kennedy's caliber, the general consensus is that you better be ready for a fast, run and gun type of game. Kennedy, one of the states best squads, was coming off an upset loss to Don Bosco Tech in the semi-finals of the Passaic county tournament and was gearing for a big game against Belleville. Kennedy did not disappoint its fans as the host school jumped out to a 32-16 lead at intermission and coasted home.

"It was the usual things that have hurt us all year long," Colucci said of his teams effort versus PK. "A lack of rebounding, not enough patience in the offense and not taking good percentage shots."

With the season now history, Colucci is quickly beginning to outline his plans for 1985-86. "We need a player who can give us the 20 to 25 points a game. The summer will be very important in the development of our younger players. There are some good athletes on this team who have the ability to be good basketball players. The most important thing now is that the team cannot stop playing basketball. You can't put the ball down in March and expect to pick it up again in November. I'll guarantee you that other teams in this area do no forget basketball once this season is over."

## Vito's Garden Market knocks Slams in recreation volleyball

The eleventh week of action in the Belleville Recreation Men's Volleyball League was held on Tuesday, Feb. 12.  
Playing perfectly Vito Sylvestro's Garden Market shut out the Slams 15-0, 15-0.  
In another important game Subs N-Staff overpowered Mystery 15-5, 15-6.  
The Belleville Political and Social Club grabbed onto fourth place as they stopped De Lorenzo Construction (Heat) 16-14, 9-15,

and 15-11.  
Getting their third match of the season MDA and Co. accepted a forfeit from Perfection Knife.  
**Standings**  
Vito Sylvestro's 10-1 Subs-N-Staff 9-2 Mystery 8-3 Bell. Political and Social Club 6-5 De Lorenzo Const. 5-6 MDA and Co. 3-8 Perfection Knife 2-9 The Slams 1-10

## Bucs narrowly win district wrestling title

By Joe Piegaro

Last week the fortunes of the BHS wrestling squad were close to the bottom of the barrel. Losses to Phillipsburg (54-8) and Clifton (35-19) left the fans and the competitors reeling in disbelief. "The Streak" of 25 consecutive matches in a row without a loss had been unceremoniously shattered. Most observers felt the 1984-85 wrestling team was a horde of gluttons feasting on a weak schedule.

Additionally, Essex Catholic High School had formed an impressive won-lost record against formidable competition and was tabbed as the odds-on favorite to win the District 7 title for the first time since 1976.

Coach Gene D'Alessandro was forced to enter the field without 141 pounder Luke Silletti, a certain second place finisher, out with a season ending knee injury.

Only a team of true champions, "never say die athletes," could even attempt to overcome such odds.

Well, as the quotation goes, "The King is dead! Long live the King!" Belleville's embattled grapplers won back the District 7 title from St. Benedict's with a show of gutsy, emotion charged wrestling.

The Bucs finished with 115 team points, only two and a half points higher than runnerup Kearny High School. The rest of the field finished in this order: Essex Catholic 90 points, St. Benedict's 65 points, Bloomfield 42 points, Glen Ridge 41 1/2 points, Nutley 40 1/2 points, Harrison and Montclair Immaculate 0 points.

There were some pleasant surprises, such as Mondo Nardone finishing second at 122 pounds and Marc Criscione finished sec-

ond in the heavyweight division. Other not so pleasant surprises were Joey Cerreto finished third at 101 and the Bucs' inability to win a single match at 158 or 170 pounds.

As always, some things are predictable, such as Mike Gibbons winning at 188 and being named tournament MVP, or Dom Cerreto winning easily at 115 pounds.

Finally, there is always someone who overcomes an exceptional number of obstacles to claim the golden ring. This year's hero was Ralph Zarro. Wrestling with a severe case of the flu, "Junior" outlasted Glen Ridge's Rick Moskowicz 6-5 to earn his second District 7 title.

Earlier in the year, Moskowicz had beaten up on Zarro by an 11-2 score. "Junior" waited the entire year to get even and did so in dramatic fashion. A 13-2 quarter final romp, a 14-3 rout in the semis and a close, but convincing victory in the finals will probably have Zarro seeded first or second in the upcoming regionals.

Altogether, the Bucs had three gold medal winners (Dom Cerreto, Zarro and Gibbons), four seconds (Nardone, Vince Caprigione, Cam Rispoli and Criscione), one third (Joey Cerreto) and a fourth (Tim Buckley). As stated earlier, Belleville forfeited all bouts at 141 due to Luke Silletti's injury. Dave Silletti (158) and Sean Mulcahy (170) were first round losers.

All first, second and third place finishers will advance to the Region 2 Championships held this week at Passaic Valley High School.

With such an outstanding finish to this season's team aspect, most everyone has overlooked the one constant this year which probably

kept the seams from splitting. Coach Gene D'Alessandro never panicked, never lost confidence in his charges. Gene was under criticism much of the year for participating in a weak N.J.I.L. wrestling conference. There were dissenters in the ranks who felt competing in three tournaments rather than dual meets hurt the team. Still others complained Gene's style was too laid back and not nearly aggressive enough to earn state recognition.

Through it all, D'Alessandro answered back in his own dignified manner: no comments, no put downs, no remarks, just action. He has now won seven District 7 titles in the past nine years, the closest thing to a dynasty in North Jersey. He has 103 wins as a coach at Essex Catholic High School and 99 wins at BHS. While at the helm at Belleville, Gene has coached 39 district champs, 3 region champions and one state champion. Additionally, "D" has tutored 24 county gold medal winners. He is nearly a legend amid fellow coaches when it comes to seeing meetings, and he is NUMBER ONE in this writer's book as a coach, a teacher and as a gentleman.

**TILTS & STACKS:** Rather than explain each weight class in detail, here is a capsulized edition of the districts... 101 1st Monico Nadera, St. Benedict's, 2nd Mark Vicari, Bloomfield, 3rd Joey Cerreto, BHS, 108 1st John McCaffrey, Nutley, 2nd Larry O'Rourke, Nutley, 3rd Mark Susas, Essex Catholic, 115 1st Dom Cerreto, BHS, 2nd Joe DePiro, Essex Catholic, 3rd Charles Rodriguez, Kearny... 122 1st Rene Calduz, St. Benedict's, 2nd Mondo Nardone, BHS, 3rd Art Cuffani, Bloomfield... 129 1st

Dennis Hall, Essex Catholic, 2nd Vince Caprigione, BHS, 3rd Dave Lutz, Nutley... 135 1st Vin Mautone, Essex Catholic, 2nd Cam Rispoli, BHS, 3rd Justin Scarpone, St. Benedict's... 141 1st Fred Pita, Kearny, 2nd Vin Gon-salves, Essex Catholic, 3rd Anthony Catalano, Bloomfield... 148 1st Ralph Zarro, BHS, 2nd Rick Moskowicz, Glen Ridge, 3rd Andy O'Donnell, Kearny... 158 1st Pat Caruso, Essex Catholic, 2nd Jason Scarpone, St. Benedict's, 3rd Dave Hurley, Glen Ridge... 170 1st Tom Caruso, Essex Catholic, 2nd Greg Grober, Glen Ridge, 3rd Ray Mackalons, Kearny... 188 1st Mike Gibbons, BHS, 2nd Paul Vinges, Glen Ridge, 3rd Nick Seelman, Nutley... HWT 1st Tom Boyd, Kearny, 2nd Marc Criscione, BHS, 3rd John Matthews, St. Benedict's... two weeks ago the Quiz Question was "Who was the only BHS wrestler to own three 20 victory seasons?" The answer is Vince Muscatello who went 20-2 in 1973-74, 25-4 in 1974-75 and 21-5 in 1975-76.

This week's Quiz Question: Only two wrestlers have ever won the Essex County Wrestling Tournament and then proceeded to win the State Tournament held in Princeton. Can you name both the wrestlers and the year they won their respective titles? Wrestler of the week is a draw once again, this week between "Iron Mike" Gibbons and Ralph Zarro. Gibbons won consideration for his Chris Musmanno imitation, slaughtering three lambs in the districts while Zarro was selected for his gutsy victory while fighting a serious virus. Great job fellas and best of luck in the regionals! Remember the "Road to the States."

## Lady Bucs lose final game to Paterson Kennedy 48-38

By Michael Lamberti

After playing some exciting basketball down the stretch of the season, the Belleville girls basketball team was less than effective in losing its 1984-85 finale to Paterson Kennedy, 48-38 at Belleville High last week.

The loss closed the books on a 9-13 season for Karen Fucello and company. It marked the first losing campaign at BHS since the 1976-77 season, but Fucello has a number of young players returning next year that are determined to bring winning basketball back to Belleville.

"We are just flat," Fucello said in referring to the loss against NNJIL rival Kennedy. "We could put together four solid quarters and once again, our foul shooting was the key to the game. We lost at least four (if not more) games this year because of our foul shooting. This was one of those games."

Belleville was shooting just 48.5 percent from the foul line entering the game with PK and did little to improve that statistic. "We have the capabilities to defeat some of those teams," Fucello said. "We're not executing properly and since we lack the height, especially in the middle, that really hurts our chances."

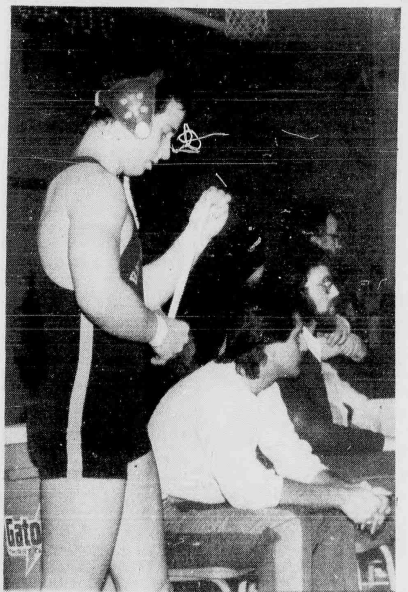
In the loss to Kennedy, senior Donna Brooks closed the books on a fine career with nine points.

Junior Desiree Johansen, who finished the season as the teams high scorer, was limited to three points. Sophomore Angel Greco tallied ten and freshman Judy Nehiia had four points.

Belleville loses two seniors, Brooks and Cheryl Marion, to graduation this spring. Next season, five players will return with a solid varsity background. Juniors Sheri Phelps, Johansen and Sherri Sorrentino, along with sophomore Greco and freshman Nehiiz will form the nucleus of an experienced team. Once again, Fucello's problems will lie in the pivot.

Not since Dawn Ritacco was graduated in the spring of 1981 has Belleville had a legitimate center. Nowadays, almost every team in Essex County and the NNJIL possesses a legitimate big girl in the pivot and Belleville's lack of height has hurt them in past years.

**NOTES:** Girls finished 6-8 in NNJIL, 3-5 outside the conference. Shabazz won the Essex County girls championship for the fourth straight year, stopping Irvington in a thriller at Seton Hall, 59-58. Belleville's six conference wins came against three opponents, Clifton, Passaic and Montclair, whom the Lady Bucs defeated twice each. The Times will wrap-up the season next week.



Suiting up

Belleville wrestling team dominates the District 7 tournament.

## Club 36 East defeated 73-69 in recreation game

The final week of the regular season in the Belleville Recreation Department's Men's Basketball League was held on Thursday, Feb. 14.

In the battle for second place in the "A" Division, the Martucci Brothers, ignited by Bruce Gardner's 27 points and Gary Bells' 17 points, defeated Club 36 East in overtime 73-69. Game high scoring honors went to the loser's Ed Jeronigan who hit for 30 points while teammate Kim Fisher added 26.

For Pete's Sake led by Doug Whaley (27 points) and Tony

Galubic (22 points) sealed up fourth place as they slipped by Nu Plus 77-64. The Division champion Nu Plus were guided by Cecil Stetson who poured in 31 points.

Danny Dunn exploded for 34 points and brother Joe Dunn added 20 to help Nutley grab third place as they stopped De Lorenzo Construction 79-65. Thirty-one points by De Lorenzo's Wayne Bubet were wasted in the loss.

**"B" Division**

Winning their sixth game of the year, RLM Graphics fired by Bill

Cook's 24 points and Alan Talmadge's 14, turned back Rosebud's Pub 64-49. In the loss, Rosebud's received 21 points from Steve Dondarski and 16 from Doug Jackson.

Twenty-six points by Ron Pen-netti and Lester Johnson enabled Corbo-Marbach to crush Ten-Two 77-39. The losers were led by Bill Nankervis (14 points) and Ron Thompson (12 points).

Rocky's Raiders finished the season with a 9-1 record as they accepted a forfeit from Allan's Place.

Standings for both the "A"

Division and the "B" Division are listed below.

"A" Division	
Nu Plus	7-3
Martucci Bros	6-4
Nutley Pub	6-4
For Pete's Sake	6-4
Club 36 East	5-5
De Lorenzo Const.	0-10
"B" Division	
Rocky's Raiders	9-1
Corbo-Marbach's	8-2
RLM Graphics	6-4
Rosebud's Pub	3-7
Ten-Two	2-8
Allan's Place	1-9



Also  
available in  
soft pack.

New  
crush-proof  
box.

# MERIT

A world of flavor in a low tar.

Warning: The Surgeon General Has Determined  
That Cigarette Smoking Is Dangerous to Your Health.

8 mg "tar," 0.6 mg nicotine av. per cigarette, by FTC method.

© Philip Morris Inc. 1984

## Events in the Area

### Fiber artists exhibit at Oakside

The Oakside Bloomfield Cultural Center, 240 Belleville Ave., will present an exhibition by New Jersey fiber artists Suelen Glashauser, Pamela Scheinman and Carol Westfall 1 to 4 p.m. March 3 through March 24. A reception for the artists will be held opening day.

### St. Patrick's dance March 15

The Belleville Music Parents will sponsor a St. Patrick's Day dance March 15 at Belleville High School. All Belleville students are welcome. Cost is \$3.

### 'Crimes of Heart' debuts Mar. 8

Nutley Little Theatre will present "Crimes of the Heart" March 8, 9, 15, 16, 17 (matinee), 22 and 23. March 15 performance will benefit the Red Cross. Tickets are \$8. Call 667-0374.

### CMHS workshops begin March 3

Community Mental Health Services for Belleville, Bloomfield and Nutley is offering a series of three workshops on single parenting, surviving your child's adolescence and you and your aging parent.

Each workshop group will meet weekly for five weeks March 4 to April 3. For information and registration, 450-3100.

### Unity concert set for March 17

Unity Concerts presents pianist Alicia deLarocha 3:30 p.m. March 17, Montclair High School Community Auditorium, Park and Chestnut streets. Tickets are \$10 to \$15, \$5 for students with I.D.

Program includes "Fantasia in C minor" and "Italian Concerto" by Bach; "Chaconne" by Bach-Busoni and "Novelette" and "Phantasia in C major" by Robert Schumann. For information, 744-6770.

### 'Day in Hollywood' at playhouse

"A Day in Hollywood/A Night in the Ukraine" is running through March 9 at the Studio Playhouse, 14 Alvin Place, Upper Montclair.

Performances will be Tuesdays through Sundays, tickets are \$7 and advance reservation is suggested. Call 744-9752 for information.

### Recycling group meets today

Bloomfield Advisory Recycling Committee meets 7:45 p.m. Feb. 28, Room 205 law enforcement building.

The group is looking for volunteers to promote recycling in town organizations or clubs or help initiate recycling in their own buildings. For information 743-4400, ext. 282.

### New program for TEEN club

Planned Parenthood's TEEN Health Club is sponsoring a new series of programs. The group meets 4 to 6 p.m. first and third Tuesday at 799 Bloomfield Ave., Verona. For information 239-8003.

Steve Trivino, manager of Powerflex Nautilus, Verona, will discuss the proper use of weightlifting as a tool for better health Mar. 5. A demonstration and discussion of the new seat belt law will be led by a member of the National Safety Council Mar. 19. New Jersey Bell's program "Ten Seconds for Safety," will be presented Apr. 2.

### Class of 1965 planning reunion

Belleville High School class of 1965 will hold a reunion 7:30 p.m. Nov. 2 at The Chandelier, Belleville. For information, Elaine Perna, 68 Freeman St., Roseland, 07068 or Bob Turken, 76 Dumont Ave., Clifton, 07013.

### Barringer class of 1935 to meet

Barringer High School class of 1935 will hold its 50th reunion this fall. For information, Tom Veltre, 227-9574.

### Seton Hall sets 50th reunion

Seton Hall Preparatory School's class of 1935 will hold its 50th reunion June 8. Call Patricia McMahon, Alumni office, 761-9512 for information or with addresses of classmates.

### May reunion for class of 1935

Nutley High School's class of 1935 will hold a 50th reunion dinner May 4. June class call Fred Heidt, 667-4249. January class call Joe Laurite, 667-6199.

### Chinese auction tomorrow at 8

The ladies' auxiliary of St. Mary's Knights of Columbus 2346 will sponsor a Chinese auction 8 p.m. March 1 in the Knights Hall, 150 Chestnut St. For tickets, call 667-9278 or 667-7728.

### Twenty years for class of 1965

Weequahic High School class of 1965 will hold its 20th reunion Nov. 30. Contact Dennis Estis, 19 Oakwood Ct., Fanwood, 889-7957 or Poppy Segal, 34 Fawn Dr., Livingston, 994-2311.

### Watessing card party March 8

The Watessing Home and School Association will hold a card party 7 p.m. March 8 at Watessing School. Admission is \$5. For tickets, call Toni Carbo, 748-0704 or Irene Geiselmann, 743-6042.

### Cocktail fashion show at Elks

Nutley's Elks Auxiliary will hold a champagne cocktail fashion show 8 p.m. March 22 at Elks Lodge, 242 Chestnut St. Fashions will be by Fashion Bud. Tickets are \$6. Call Rosemary Carnevale, 759-6396 or Janet Gilmore, 667-5806.

### Gregory Club announces events

Gregory Club of New Jersey will sponsor a 30 plus singles dance 9 p.m. to 1 a.m. March 8 at White Eagle Manor, 41 Broughton Ave., Bloomfield. For information, call Fred at 942-7831 or Bob at 674-1217.

The group is also planning a covered dish supper 5 p.m. March 10 at Knights of Columbus Hall, 150 Chestnut St. Those coming should call 942-7831. Admission is \$4.

### Auxiliary bunco night tomorrow

American Legion Auxiliary, Nutley Unit 70 will hold a bunco night 7:30 p.m. March 1. For tickets, call Joan McCarthy at 751-4180.

Donation is \$4. Refreshments will be served and proceeds will benefit veterans' affairs, children and youth and the scholarship fund.

### Irish Unity conference March 14

The New Jersey chapter of the Irish American Unity Conference will meet 8 p.m. March 14 at St. Clare's Parish Center, Clifton. For directions, call Rebecca at 939-5490. Persons interested in the issue of human rights in Northern Ireland are welcome.

### Card party March 1 at Belleville

Belleville High School Home and School Association will hold a card party 7 p.m. March 1. Fashions from Mandeas, Nutley, will be modeled by students. Admission is \$3. For tickets, call Annmarie Perna, 759-7119.

### Bloomfield '38 seek classmates

Bloomfield High School classes of January and June 1938 seek members for a 47th reunion 7 p.m. to midnight May 26 at Russian Hall, Singac.

Fee of \$35 includes cocktail hour, hot and cold buffet, open bar, dancing and prizes. Contact Palmer DeAngelis, 301 Central Ave., West Caldwell, 07006 (January class) and Mildred Tabor Loughlin, 174 Baldwin Place, Bloomfield, 07003 (June class.)

### Card party March 22 at Savings

Nutley United Mothers' Social Club will sponsor a card party 7:30 p.m. March 22 at Nutley Savings & Loan. Admission is \$3.50. For tickets, call Judy Sorenson, 235-1049 Diane Darnell, 284-0083, or Mary Ann Griese, 661-2092. No tickets will be sold at the door.

### Luncheon fashion show at Manor

The Guild of Clara Maass Medical Center will sponsor its annual luncheon fashion show 11:30 a.m. March 27 at The Manor, West Orange. For tickets, call Clara Maass Development Department at 450-2277.

Fashions courtesy of Jalms of Millburn. Donation is \$20. Proceeds will benefit the Dr. Ralph Remondelli Inservice Nursing Fund and the Mary Ann Forline Scholarship Fund.

### Singles convene tomorrow night

Success Oriented Singles will meet March 1 and March 15 at St. James Church, Valley Road and Bellevue Avenue, Montclair. For information, call 342-0548.

### Senior group swims Wednesdays

A swimming group for Bloomfield senior citizens meets Wednesdays at the Orange YWCA for a one hour swim. There is a small charge based on the number of participants. Lifeguards will supervise. Transportation not provided.

For information 743-4400, ext. 254

## THE NEIGHBORHOOD NEWS TEAM



## IN THE FIELD EVERY DAY

Bringing You The Best In Local

• NEWS • SPORTS • FEATURES

Keeping You Informed About The  
Community Where You Live

The Nutley Sun  
abc TV36 News Hour

The Belleville Times  
The Bloomfield Life

NEWS ROOM  
667-2100





# BUSINESS DIRECTORY

## CHILD CARE —

### NURSERY SCHOOLS

**WISE OWL NURSERY SCHOOL**  
617 Washington Ave.  
Belleville  
State License Since 1969



program teachers facility

Sunny, home like 1st floor on vibrant. Limited places available. Absolutely No Day Care. Visitation 1211 328



**St. Mary's Has it All**  
4 year old program  
Full Day Kindergarten  
After school care for working parents. For further information call:  
667-0801 328

## GARAGE SALE

HOUSE SALE  
EVERYTHING MUST GO  
TOYS, FURNITURE, HARDWARE, Sat. Mar. 2nd 10am to 4pm. Mar. 3rd 10am to 4pm. 168 White Ave. Bloomfield 893-9204

## MERCHANDISE

**SELLING OUT 3 Days Only**  
Sofas ..... \$149  
Recliners ..... \$59  
Dressers (5pc) ..... \$149  
Kitchen Sets (7pc) ..... \$99  
Dining chairs ..... \$149  
Queen Matt. & Box ..... \$129  
Full Matt. & Box ..... \$99  
Twin Matt. & Box ..... \$79  
Full Size Hydros ..... \$99  
Queen Sleepers ..... \$119

## SHARPS

44 Homestead Ave. Belleville  
991-0327 431  
CERAMICS by Ann's Classes Monday & Wednesday, 7-9:30 PM. Beginners Welcome. Complete ceramics for sale. Firing Supplies Greenware.

## SELECT AGED FIREWOOD

5 1/2 — 1/2 Cord  
\$125 — 1 Cord  
Call 744-9102 228

## BOOK FOR SALE

History of the Nutley Velodrome. A special 50th Anniversary Book written by Nutley Sun Editor Michael C. Gabriele. Facts, records, biographies and rare photos of the legendary cycling stadium.  
To order call 667-5669

## SEWING MACHINE

never used 84 model. Full auto, guarantee, does everything. Cost \$300. Must sacrifice \$150.00. till after 5 PM. Call 644-5522 718

## BARTER BOX

ment Thrift Shop. Tues day thru Saturday, 10 am - 5 pm. According to used Clothing, Furniture, Antiques, Household Goods, 102 Walnut St. Montclair 744-9698 916

## Used Desks, Chairs, Filing Cabinets.

Edelstein Office Furniture Wtite, 946 Market St. in Paterson  
Call 323-6153

## 50 METAL CHAIRS

with attached cushions, \$5.00 each. Good Condition. Call 667-0483.

## Belding Furniture, bunk beds, included trampoline, ladder & side rail.

\$150.00. till after 5 PM. 751-3472

## JENOX CHINA, JEWELRY PATTERN

PINK & WHITE with 10mm. 8.5 piece plate setting with 10 service pieces, excellent condition. Firm. Cash only. 235-1186

## Sandy Lane Nursery School

"A Child's World Where Playing Is Learning"  
634 Mill Street  
Belleville  
751-6380  
10 days and hours to meet your needs  
2085 730-10-15  
Call or come in to register  
School open to visitors  
Development Programs in:  
• Arts • Music • Skills  
• Language • Social Development  
Continuous day care programs for working mothers.  
• National Parent Teacher Association  
• State Licensed Certified School & Teachers

## ACCEPTING REGISTRATION FOR THE SUMMER AND SEPTEMBER

Dedicated to a program of Early Childhood Education. 37

## MERCHANDISE

### HOT POINT 182 Cub ft.

White used for 1 year like new. 661-4019

### SOFA — Mediterranean Style w/hammer, 108" long, gold velour, \$300.

Call after 6 PM. 751-3372

### Sears Portable Dishwasher 6 mos. old \$240.

Call before 9 am to 1 pm. 751-7828

### WANTED: Used Air Conditioners, Cash.

482-3581 228

### Sofa & 2 matching chairs.

Must go! Best Offer. 751-4083 after 6 PM.

### GE WASHER & Dryer

Heavy Duty. Dryer used 2 months. Twin maple bed & spring. Kitchen table. Double dresser with mirror, chest of drawers & bed, automatic ironer & presser.  
Call 667-8074

### LIQUIDATION SALE.

Typewriters, telephones, auto, dialers, beepers, speaker phones, etc. MIDS-SELL — 418 935-5553

## PETS

### AKC MINI PUPPIES

1 female, 2 males. \$350. \$350. Stud service avail. Call 956-3300

## FLEA MARKET

### HEA MARKET

ST. CLARES CHURCH 391 ALLWOOD ROAD CLIFTON, NJ SATURDAY 3/2 5-PM SUNDAY 3/3 10-5PM

## WANTED TO BUY

OLD CLOCKS, POCKET WATCHES, Wanted. Highest Cash Paid. 1 quote by phone. Will travel Union 964-1224

### LIONEL AND OTHER TRAINS.

Crazy Collector pays top prices. Call 334-6709 or 635-2056

## GUN COLLECTOR

Lic. #234. Wants to buy for cash: Guns, Swords, Daggers, Medals, Especially Military Items. Evaluation & Appraisals. All transactions confidential. Call 783-6145 415

### Wanted for Cash: Old Books & Stamps.

Old books, stamps, old records, old photos. Private Buyer 224-6205 218

### I'M BUYING TOOLS!

Old, Used, Any Type, Any Quantity. Call "Gene" 696-4908 or 438-7413 Days except Sunday & Monday 314

## USED TV'S BOUGHT

Call 673-3845 627

### WANTED: Used Air Conditioners, Cash.

482-3581 228

### EMILY'S RESALE

Boutique Consignment open Thursdays 9 to 8 pm, Friday 10 to 6 pm, Sat. 10 am to 5 pm. SALE - 2 for 1 Buy one clothing item & recv. one FREE equal value. With this ad. 129 Montpelier St. Bloomfield. Call 429-4851 44

## LOST & FOUND

### LOST PASSBOOK #01

230 2000 3785 3 PAYMENT. PLEASE RETURN BOOK TO BANK, FIRST FIDELITY BANK, NUTLEY, N.J.

### HELP WANTED

PART TIME. Veterinary Assistant. 15-20 hours per week. Student interested in vet. med. for assisting doctor. Some lab & general duties. Call 429-0470. 228

### BARTENDER

FEMALE PREFERRED. CALL AFTER 6 PM. 661-2782.

### DRY CLEANING ATTENDANT

IN NUTLEY/CLIFTON AREA. Full Time, 12 hr. shift. 6 am to 6 pm. 6 DAYS. CALL 235-0738 317

### PIANO & ORGAN WAREHOUSE SHOWROOM

for the largest Piano and Organ Dealer on the East Coast  
New, Used Floor Models, Demo's  
15 NATIONALLY FAMOUS BRANDS  
OVER 300 CATALOGUED INSTRUMENTS  
Guaranteed Lowest Prices  
Used Pianos and Organs from \$99  
Rental Purchase Plan Available  
Call, or see Ed Borgia  
744-1200  
Baldwin & Hammond Logo here

### Div. of Altendun Piano House, Inc.

507 Bloomfield Avenue, MONTCLAIR 131

## HELP WANTED

### ALL-PHASE EMPLOYMENT SERVICE

382 Franklin Ave. Nutley, N.J. 661-W-0-R-K  
We cover Tech-Elec, Clerical Engineering, Disabled & temporary. 627

### ACCOUNTING CLERK

Mtn. 2-3 years experience. General accounting experience. Full. CRT knowledge desirable. Belleville area. Good benefits. M/F  
Call Elaine 450-3251

### SECRETARY

Typing, filing, other general duties. 2 years plus of secretarial business school experience. Type 50wpm. Word processing knowledge preferable. Belleville area, good benefits. M/F  
Call Elaine 450-3251

### CLERK TYPIST PROVIDENT SAVINGS BANK

SEVERAL POSITIONS AVAILABLE  
Experience desired. Good typing skills, good communications ability.  
Pleasant working conditions. Excellent benefits package.  
Call Personnel Dept. 759-5780

### E/O/E M/F

STOCK CLERK — Will train. Magazine distribution office 12-9 or 1-5 daily \$3.50 per hr. 667-9300.

### AIRLINES, CRUISESHIPS, HOTELS

now hiring. All types of jobs available. Experience unnecessary. Call 761-682-2900, ext. 78613

### GOVERNMENT JOBS.

\$15,000 - \$50,000+yr. possible. All occupations. Call 1-805-687-6000 ext. R-7100 to get out now.

### TELLERS

### NUTLEY

### FULL TIME

Position available for experienced teller or qualified cashier. Experience helpful. Good Promotional Opportunity. Company Paid Benefit Program.  
Call Personnel 777-1800  
ext. 322 for appointment or visit our office

### NATIONAL BANK

615 Main Avenue, Passaic, N.J.

### SCREEN PRINTER

SOME EXPERIENCE PREFERRED  
NUTLEY 667-9400

### SECY 520K

Nat'l. Hdqrs. seeks prof., exp. secy. Phones, Corres., reports, word proc. Exc. Incls. F/p'd Call Kathy Phillips at 743-1614

### NATIONAL PERSONNEL

547 Bloomfield Ave. Bloomfield

### LEGAL SECRETARY FOR CONGENIAL M/L FIRM

REAL ESTATE. EXP. PREFERRED. SALARY COMMENSURABLE WITH EXP. IMMEDIATE OFFERING.  
CALL 743-1042

### RCPT. \$13K

Busy law office seeks exp. rcpt. Phones, typ. dictaphone. Exc. opp. to enter law field. F/p'd Call Kathy Phillips at 743-1614

### NATIONAL PERSONNEL

547 Bloomfield Ave. Bloomfield

### SECRETARY

Bloomfield Center. Provident Savings Bank. Excellent typing skills required. stenographic dictaphone. Good communications ability. Mortgage or bank experience helpful. Competitive salary. Excellent benefits package. Please office. Pleasant working conditions.  
Call Personnel Dept. 759-5780  
E/O/E M/F  
MEMBER F.D.I.C.

### MECHANICAL ARTIST

PASTE-UP, INK RULING, PHOTOGRAPHY, BEGINNER. CONSIDERED NUTLEY 667-9400

### FULL TIME MEDICAL RECEPTIONIST

needed for busy internist's office. Typing experience. Medical terminology helpful. Must be willing to learn computer. No evenings or Saturdays. Reply to Belleville Times, Box 111, Belleville, N.J. 07109.

### PIANO & ORGAN WAREHOUSE SHOWROOM

for the largest Piano and Organ Dealer on the East Coast  
New, Used Floor Models, Demo's  
15 NATIONALLY FAMOUS BRANDS  
OVER 300 CATALOGUED INSTRUMENTS  
Guaranteed Lowest Prices  
Used Pianos and Organs from \$99  
Rental Purchase Plan Available  
Call, or see Ed Borgia  
744-1200  
Baldwin & Hammond Logo here

### Div. of Altendun Piano House, Inc.

507 Bloomfield Avenue, MONTCLAIR 131

## HELP WANTED

### SWITCHBOARD OPERATOR

HAVE IMMEDIATE OPENING FOR SWITCHBOARD OPERATOR. EX- PERIENCE A PLUS. PLEASANT PHONE VOICE NECESSARY. TROPICANA PRODUCTS INC. 1150 HARRISON TURNPIKE, SO. KEARNY, N.J. 07032. 997-0010. M/F

### SEWING MACHINE OPERATORS

Local manufacturers need several experienced sewing machine operators. Will consider training the right person. Good benefits. Clean shop. Call for appl. 748-4880

### DANCE MANUFACTURING DIV. OF ANNIN

BLOOMFIELD, N.J. FOF

### HELP WANTED.

Tickets/Packers. No experience needed. Must speak & write English. Apply, Mon. - Thurs. betw. 10 am & 12 pm. QIV APPAREL, 112 River Rd. Clifton

### PART TIME FULL TIME

Operate AB Dick Press. Some experience preferred. Call 751-1287

### MESSANGER

For light pick-ups. Part time flexible hours. Able to drive small truck. Call 242-6111

### TYPIST/STENO

Good typing & Steno skills. Previous office experience. Small manufacturing office. 9-5 PM. Liberal company benefits. Salary commensurate with experience. Rafter Machine Co. 259 Stephens St. Bloomfield 759-4080

## PURCHASING AGENT/ MANAGER

Take full charge of all purchasing functions with total responsibility for internal paper flow. Must be highly versed in computer processing systems & procedures. Excellent salary & benefits. Send resume with salary history & recommendations to: THE NUTLEY SUE, BOX 144, Nutley, N.J. 07110

### Data Processing Office Manager

Take full charge of purchasing-expediting & all procedures required for computer operation on IBM System 36. Essex County area. Excellent salary & benefits. Send resume w. salary history & recommendations to: THE NUTLEY SUE, BOX 144, Nutley, N.J. 07110

## SALES ADMINISTRATOR

with excellent sales background in sales/marketing environment, w. excellent communication & organizational skills. Must be able to work independently. Full time position w. full benefits package. Forward resume or work experience to: U.T.I., 614 Franklin Ave., Nutley, N.J.

## CAFETERIA WORKERS

Opportunities available for individuals willing to commit to 1 yr. term assignment. Working conditions at this prestigious company in the Nutley/Clifton area are outstanding. The positions offered, FLEXIBLE HOURS, BETTER THAN USUAL pay w/ periodic increases and benefit package.  
Call Personnel Dept. 759-5780  
E/O/E M/F  
MEMBER F.D.I.C.

### CLERK

### CUSTOMER SERVICE DEPT.

Attractive opening offering interesting diversified duties including phone work and typing. C.R.T. experience desirable. 35 hour week. Liberal company benefits. Call: PERSONNEL 997-3000

## MECHANIC

Knowledge of industrial building maintenance. Capable of doing own repairs of A/C, power, heating, etc. Excellent position for responsible individual. Liberal company benefits. Submit letter or resume with salary desired to: BOX 524 KEARNY, N.J. 07032

## ENGINEERING DEPT.

Leading manufacturer of consumer goods has immediate opening for alert, retentive individual. Duties include maintaining records and files, liaison with suppliers and consultants; some typing required. 40 hour week plus liberal company benefits. Call: PERSONNEL 997-3000

## SEMI RETIRED OR RETIRED PERSON

Flexible daytime working hours. Monday thru Friday. Repairing & refurbishing coffee machines in our air conditioned shop. Steady work. \$4.50 per hour while training. \$5.00 after training. Interviews Friday 10-4 P.M.

## SALES CLERK WANTED

Experience in dealing with customers. Plenty of overtime opportunity. Apply in person: JOSEPH RICCIARDI PAINTS 91 WASHINGTON AVENUE NUTLEY

## ADVERTISING SALES

Experienced only, Nutley area, three community newspapers and TV station, excellent opportunity, above average earnings potential, full benefits, protected territories.  
Call 667-2100

## TELEPHONE SALES - CLASSIFIED ADVERTISING

Ft./Pt. experienced necessary, Nutley area, top pay, commission bonus, pleasant working conditions.  
Call 667-2100

## HELP WANTED

### MANAGEMENT TRAINEE

Wanted for Computer Accounts Receivable. Entry position. We are looking for a conscientious person to manage this very busy dept. Excellent experience record required. Must have at least 5 years bookkeeping experience & at least 2 years computer experience. Salary commensurate with experience. College degree desirable. Send resume & salary requirements to Tina Mullen, P.O. Box 58, Verona, N.J. 07094.

### BURGER KING is now

accepting applications for permanent positions during the day & closing shifts. Apply in person. 88 Franklin Ave. Nutley betw. the hrs. of 2 & 4.

### LEGAL SECRETARY

For congenial downtown Newark law firm. Hours: 9am - 5pm. 75plus WPM. Heavy dictaphone & stenography. Very diversified. Call 9am - 5pm. Ask for Mr. George Imperial. 645-5008 228

### 643 Prospect St. Nutley, N.J. 667-8534

Passaic - 471-4211 718

## RESTAURANT Opportunities

### Part Time - Days & Eves.

Ideal opportunity to earn extra cash with a second personal or family job to help meet those ever increasing bills. We need mature, responsible people who will care for our customers in a manner that will encourage them to return and refer others.  
Openings available for:

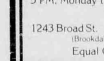
- COOKS
- PRODUCTION
- WAITERS/WAITRESSES
- DISHWASHERS

Must be able to work approx. 12-30 hours per week and be minimum 18 years of age to close. No experience necessary. We offer competitive pay & generous food discount. Uniforms provided. For details please call Manager between 2 PM - 5 PM, Monday thru Friday. 338-8669

1243 Broad St. Bloomfield, NJ

(Blockbuster Section, near Exit 125) 629

Equal Opportunity Employer



## DATA ENTRY OPERATOR

2-4 years experience on I.B.M. Series 1 or related Data Entry Systems. Liberal Company Benefits. Good Starting Salary. Call:

## PERSONNEL 997-3000

## CLERK

## CUSTOMER SERVICE DEPT.

Attractive opening offering interesting diversified duties including phone work and typing. C.R.T. experience desirable. 35 hour week. Liberal company benefits. Call: PERSONNEL 997-3000

## MECHANIC

Knowledge of industrial building maintenance. Capable of doing own repairs of A/C, power, heating, etc. Excellent position for responsible individual. Liberal company benefits. Submit letter or resume with salary desired to: BOX 524 KEARNY, N.J. 07032

## ENGINEERING DEPT.

Leading manufacturer of consumer goods has immediate opening for alert, retentive individual. Duties include maintaining records and files, liaison with suppliers and consultants; some typing required. 40 hour week plus liberal company benefits. Call: PERSONNEL 997-3000

## SEMI RETIRED OR RETIRED PERSON

Flexible daytime working hours. Monday thru Friday. Repairing & refurbishing coffee machines in our air conditioned shop. Steady work. \$4.50 per hour while training. \$5.00 after training. Interviews Friday 10-4 P.M.

## SALES CLERK WANTED



## HELP WANTED

**Light Factory Work**  
Needed for circuit shop.  
P.N.C.  
284-0500

**LIVE-IN experienced Aider/Companion/Housekeeper**  
for elderly woman in  
Briarcliff Room & board  
\$125. per week, 3 cats.  
out of 4 weekends off.  
References required. 635-  
9068 after 4 p.m. 2/28

## SALES AGENT

**Wanted**  
Nationally known calendar  
manufacturer and specialty  
advertising company offers  
opportunity for an individual  
self-starter for full or part time  
work. Must have sales experience  
to present our exclusive  
calendar. Business sales experience  
and advertising specialty  
advertising to firms within the  
advertising community. The  
company is a member of the  
International Franchise Assn. If  
you know who we are to stay,  
if you have the ability to sell  
and determine your own  
work, write Pat Murphy, The  
Times, Room 402, Box  
182, Red Oak, Iowa 51566-3114

## ADMINISTRATIVE ASSISTANT

**SALES**  
BASIC CONCEPT, a  
subsidiary  
LIGHTHOUSE, which is  
a leading firm of portable  
lighting products, seeks an  
Administrative Assistant  
to work in our Sales Dept.  
located in Garfield, N.J.  
In this position, you will  
be working side-by-side  
with the President and  
Manager in the office  
following-up on sales ac-  
tivity. Candidate MUST  
have at least 3 to 5 years  
previous administrative  
experience, ability to work  
in a fast-paced environ-  
ment and type 55wpm.  
Interested candidates  
should call Personnel, 201-  
772-7800

**BASIC CONCEPT**  
JULIANZA AGENCY  
GARFIELD, N.J. 07026  
an equal opportunity employer

**DENTAL Assistant ex-**  
perience preferred but  
will train. 667-0771 week-  
days. 992-9756 weekends  
& evenings.

## ACCOUNTING CLERK

We are a northern NJ manufac-  
turer located on the Belleville  
Newark border, and are  
presently in need of an account-  
ing clerk. The position is a  
full-time position. The successful  
candidate will be responsible for  
all aspects of our Accounting Dept.  
including bookkeeping and data  
entry.

We offer good starting salary,  
benefits and growth oppor-  
tunities. Please submit resume  
with references to Personnel Depart-  
ment, 201-772-7800

## WANTED

Nature Person  
to babysit for 6 mos. old  
infant in our 5-bdr  
home. Weekdays 9-5:30.  
Call 667-3853

## ADMINISTRATIVE PERSON

Secretarial experience in  
insurance fields. (Will  
train). Good benefits for  
the right person. Call Mr.  
Lamp 235-1563

**FULL or PART TIME**  
Secretary from Your Home  
Total flexibility, make  
own hours, exclusive ter-  
ritory, generous commis-  
sion. First time in your  
own home. Please call  
338-1865

## ITALIAN CONVERSATION

By native experienced  
teacher. Reasonable fee.  
Farmers of Berlitz  
School of Languages.  
Call 746-8752 anytime  
preferably after 6 P.M.  
Montclair 1-7

## WORK FROM HOME

on the telephone serving  
our customers. Call  
998-7216

## SECRETARIES

## TIPISTYS

## WORD PROCESSING

Apply now and receive a

## \$200 BONUS

After working 100 hours

## VACATION PAY

## HOLIDAY PAY

## OTHER BENEFITS

\$1 full time

## MANPOWER

Temporary Services

CLIFTON 778-1200

176 Broad St.

Equal opportunity employer m f

2/28

## HEALTH WEALTH

New herbal nutritional  
company grossed \$80  
million month of Dec.  
as shown on TV. Full or  
part time. Supervisory  
position available. Call John  
746-5084

## WANTED

## APARTMENT

## EXPERIENCE

997-8086

Curm

\$15.00 per hr. potential

Springing & Evening shift

## HELP WANTED

**PART TIME DRIVERS AND/OR SCHOOL VEHICLE AIDS**  
**MALE FEMALE**  
Excellent opportunity for  
retirees, housewives etc. to  
supplement your income  
driving or supervising school  
children in our car and van  
fleet. Room & board  
\$125. per week, 3 cats.  
out of 4 weekends off.  
References required. 635-  
9068 after 4 p.m. 2/28

## SALES AGENT

**Wanted**  
Nationally known calendar  
manufacturer and specialty  
advertising company offers  
opportunity for an individual  
self-starter for full or part time  
work. Must have sales experience  
to present our exclusive  
calendar. Business sales experience  
and advertising specialty  
advertising to firms within the  
advertising community. The  
company is a member of the  
International Franchise Assn. If  
you know who we are to stay,  
if you have the ability to sell  
and determine your own  
work, write Pat Murphy, The  
Times, Room 402, Box  
182, Red Oak, Iowa 51566-3114

## ADMINISTRATIVE ASSISTANT

**SALES**  
BASIC CONCEPT, a  
subsidiary  
LIGHTHOUSE, which is  
a leading firm of portable  
lighting products, seeks an  
Administrative Assistant  
to work in our Sales Dept.  
located in Garfield, N.J.  
In this position, you will  
be working side-by-side  
with the President and  
Manager in the office  
following-up on sales ac-  
tivity. Candidate MUST  
have at least 3 to 5 years  
previous administrative  
experience, ability to work  
in a fast-paced environ-  
ment and type 55wpm.  
Interested candidates  
should call Personnel, 201-  
772-7800

## BASIC CONCEPT

JULIANZA AGENCY

GARFIELD, N.J. 07026

an equal opportunity employer

## DENTAL Assistant ex-

perience preferred but

will train. 667-0771 week-

days. 992-9756 weekends

& evenings.

## ACCOUNTING CLERK

We are a northern NJ manufac-  
turer located on the Belleville  
Newark border, and are  
presently in need of an account-  
ing clerk. The position is a  
full-time position. The successful  
candidate will be responsible for  
all aspects of our Accounting Dept.  
including bookkeeping and data  
entry.

We offer good starting salary,  
benefits and growth oppor-  
tunities. Please submit resume  
with references to Personnel Depart-  
ment, 201-772-7800

## WANTED

Nature Person

to babysit for 6 mos. old

infant in our 5-bdr

home. Weekdays 9-5:30.

Call 667-3853

## ADMINISTRATIVE PERSON

Secretarial experience in

insurance fields. (Will

train). Good benefits for

the right person. Call Mr.

Lamp 235-1563

## FULL or PART TIME

Secretary from Your Home

Total flexibility, make

own hours, exclusive ter-

ritory, generous commis-

sion. First time in your

own home. Please call

338-1865

## ITALIAN CONVERSATION

By native experienced

teacher. Reasonable fee.

Farmers of Berlitz

School of Languages.

Call 746-8752 anytime

preferably after 6 P.M.

Montclair 1-7

## WORK FROM HOME

on the telephone serving

our customers. Call

998-7216

## SECRETARIES

## TIPISTYS

## WORD PROCESSING

Apply now and receive a

## \$200 BONUS

After working 100 hours

## VACATION PAY

## HOLIDAY PAY

## OTHER BENEFITS

\$1 full time

## MANPOWER

Temporary Services

CLIFTON 778-1200

176 Broad St.

Equal opportunity employer m f

2/28

## HEALTH WEALTH

New herbal nutritional

company grossed \$80

million month of Dec.

as shown on TV. Full or

part time. Supervisory

position available. Call John

## REAL ESTATE

**FOR RENT**  
NUTLEY 4 rms, 1st fl.  
\$485 plus heat, 5 rms, 1st  
fl. \$625 plus heat.  
NUTLEY 1 1/2 E-5 rms,  
\$550 plus heat.  
BLOOMFIELD 7 rm.  
Duplex, \$450 plus heat.  
CENTRE REALTY  
OF NUTLEY  
REALTOR 667-5100

## ALL LANDLORDS

We want your apartments.  
None too small or too large.  
We send all prospective ten-  
ants to you by appointment  
only. Absolutely no fee in-  
volved. Our service to you  
completes your service to us.  
429-0804  
RENTALS UNLIMITED  
2/4

## NEWARK

5 room  
apartment \$450 heat &  
hot water included. Call  
463-6621 days

## ARE YOU MOVING?

DON'T LEAVE YOUR HOME

UNTIL YOU HAVE

PAID CASH

PER GALLON

753-1522 3/9

## BELLEVILLE

2 1/2 rms, 1st fl. gnd. apt. 1st

fl. H.W. & incl. Plus

parking & laundry

3 1/2 rms, gnd. apt. 1st

fl. H.W. & plus parking &

laundry. \$450

4 1/2 rms, gnd. apt. 1st

fl. H.W. & incl. Plus

parking & laundry. \$625

4 rms, 1st fl. duplex bldg.

Make own util. St. Peter's

Church area \$550 mo.

BLOOMFIELD

4 rms, 1st fl. Basement apt.

All util. incl. St. Val's

area. One person prefer-

red. \$450

NUTLEY

5 rms, 2nd fl. Make own

util. Best loc. in town.

METRO AGENCY

REALTOR 751-3400

## FOREST HILL SECTION

near Branch Brook Park

Newark-Belleville line

3 rms, 1st fl. gnd. apt. 1st

fl. H.W. & incl. Plus

parking & laundry. \$450

4 rms, 1st fl. gnd. apt. 1st

fl. H.W. & incl. Plus

parking & laundry. \$625

4 rms, 1st fl. duplex bldg.

Make own util. St. Peter's

Church area \$550 mo.

BLOOMFIELD

4 rms, 2nd floor with

laundry. \$450

5 rms, 1st fl. gnd. apt. 1st

fl. H.W. & incl. Plus

parking & laundry. \$625

4 rms, 1st fl. duplex bldg.

Make own util. St. Peter's

Church area \$550 mo.

BLOOMFIELD

4 rms, 2nd floor with

laundry. \$450

5 rms, 1st fl. gnd. apt. 1st

fl. H.W. & incl. Plus

parking & laundry. \$625

4 rms, 1st fl. duplex bldg.

Make own util. St. Peter's

Church area \$550 mo.

BLOOMFIELD

4 rms, 2nd floor with

laundry. \$450

5 rms, 1st fl. gnd. apt. 1st

fl. H.W. & incl. Plus

parking & laundry. \$625

4 rms, 1st fl. duplex bldg.

Make own util. St. Peter's

Church area \$550 mo.

BLOOMFIELD

4 rms, 2nd floor with

laundry. \$450

5 rms, 1st fl. gnd. apt. 1st

fl. H.W. & incl. Plus

parking & laundry. \$625

4 rms, 1st fl. duplex bldg.

Make own util. St. Peter's

Church area \$550 mo.

## REAL ESTATE FOR RENT

**FOREST HILL SECTION**  
Lovely park like atmosphere.  
Studio \$208 1 hr. \$330 2  
hr. \$412 Heat hot water &  
appliances supplied, no pets.  
Call 463-1616  
between 9-5 Mon thru Fri.  
Mon thru Fri. Sat. 9:31 p.m.

## NUTLEY

5 rms, w/garage, \$675

Heat, 1st fl. New kit.

W/W carpet. No pet.

Brokers, 667-9115

## HANCOX REALTY

UNFURNISHED

HOME EXEC.

COLONIAL 4 bdrms.

1 1/2 baths. Mod. kit.

Dishwasher. New carpet.

\$1000 mo. plus util.

Brokers 667-9115

HANCOX REALTY

## REAL ESTATE

## FOR SALE

## BEST BUYS

## THINK SUMMER

Enjoy the ground pool that

enhances this 4

bedroom, 2 bath

American Colonial.

Parents and children alike

will not want the summer

to end. All this at an afford-

able price.

This Nutley Park Court Hill Colonial is in move-in-

condition. You'll be proud of its large living room with

fireplace and near TV room plus the formal dining room

and eat-in kitchen. 3 twin size bedrooms and 1 1/2 baths

make this a special home.

## DO YOU KNOW THE MARKET VALUE

OF YOUR HOME?

CALL US FOR OUR OPINION WITHOUT

COST OR OBLIGATION TO LIST OR SELL

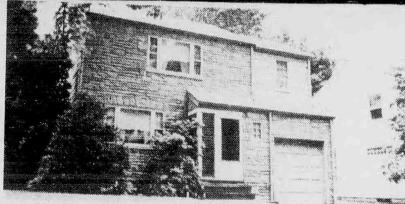
## EVERYONE KNOWS



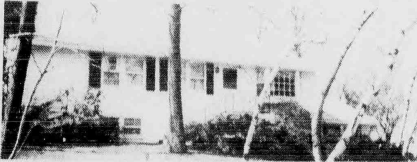
180 Centre St.  
Nutley, N.J. 07110  
667-3440

# G EORGE E. MAC MUNN C O. REALTORS

100 Woodport Road  
Sparta, N.J. 07871  
729-8727



**SPRING GARDEN - NUTLEY - FIRST TIME OFFERED** - Spotless home on beautiful tree lined Street, 3 big bedrooms, family room & encl. porch on 1st floor, 1 1/2 baths. ASKING \$139,900.



**LAKE MOHAWK - SPARTA** - lovely 3 bedroom ranch, fireplace, gorgeous views, family room, 1 1/2 baths, att. garage. ASKING \$125,000.

**SUCCESS**  
Our Expert  
Sales Staff  
Can Achieve  
The Same  
For You —  
List With  
Mac Munn

Look for this Emblem



**CIRCA 1860 - CHARMING FARM HOUSE COLONIAL OVERLOOKING NUTLEY PARK** - 4 rooms & greenhouse on 1st, 3 bedrooms, 1 1/2 baths, 60x143 lot, 2 car garage. ASKING \$115,900.



**JUST LISTED - BROOKDALE - BLOOMFIELD**. An outstanding 3 bedroom, 1 1/2 bath, beautifully decorated maint. free home with extra lg. Liv. Rm. w/ trpl. formal Din. Rm., lovely mod kitchen and so many extras you will love. ASKING \$139,500.

## Speaking of wonderful homes...



**WON'T LAST!!** - Immaculate 10 room expanded cape, 5 BR's, finished basement w/wet bar, 3 car garage, and much more!! Asking \$124,900.

Dial us.



**WAYNE K. THOMAS**  
**REALTORS**

277 Broad Street Bloomfield, New Jersey  
(201) 429-7400

"Each office independently owned and operated"  
MEMBER OF BLOOMFIELD, GLEN RIDGE,  
NUTLEY, BELLEVILLE BOARD OF REALTORS

## LIST YOUR HOME WITH US. We can help you get the most money

### WE GET RESULTS Here's Why:

- 3,000 potential prospects in our file
- Also leader in home sales
- Experienced specialists ready to sell your home
- Free Home Warranty Protection plan
- Brokerage services
- Financing to help every qualified buyer
- Member Multiple listing service

**WANT TO KNOW WHAT YOUR HOME IS WORTH?**

**Call Us Today for a FREE EVALUATION**



(201) 751-7500

727 Joramoun Street  
Belleville, N.J.

**ADVERTISEMENT FOR BIDS**  
Sealed proposals will be received by the Board of Education of the Township of Belleville, in the County of Essex, State of New Jersey, on March 12, 1985 at 10:30 am prevailing time for Electric Supplies, in the Board of Education Administrative Office Complex, 190 Carlstadt Street, Belleville, N.J. Specifications and full information may be obtained upon application to the office of the Secretary, School Business Administrator, prior to the time set for the opening of bids. No bid will be considered unless accompanied by a certified check or bid bond for 10% of the total bid, payable to the Belleville Board of Education. The Board of Education reserves the right to

reject any or all bids that in its judgement will be best for the School District of Belleville, and to waive any immaterial informalities. Bidders are required to comply with the requirements of P.L. 1975, C. 127, N.J. Law Against Discrimination and Ch. 35, Laws of 1977. BY ORDER OF THE BOARD OF EDUCATION TOWNSHIP OF BELLEVILLE, COUNTY OF ESSEX, NEW JERSEY Edward J. Appleton, Acting Board Secretary School Business Administrator The Belleville Times Feb. 28, 1985 Fee: \$13.65 No. B85-91

The Times regrets that this ad was inadvertently left out last week.

### NOTICE TO MILITARY SERVICE VOTERS AND TO THEIR RELATIVES AND FRIENDS

If you are in the military service or the spouse or dependent of a person in military service or are a patient in a veterans' hospital or a civilian attached to or serving with the Armed Forces of the United States without the State of New Jersey, or the spouse or dependent of an accompanying or residing with a civilian attached to or serving with the Armed Forces of the United States, and desire to vote, or if you are a relative or friend of any such person who, you believe, will desire to vote in the Annual School Election to be held on April 2, 1985, kindly write to the to be forwarded to you, stating your name, age, serial number if you are in military service, home address and the address of which you are stationed or can be found, or if you desire the military service ballot for a relative or friend then make an application under oath for a military service ballot to be forwarded to him/her, stating in your application that he/she is over the age of 18 years and stating his/her name, serial number if he/she is in military service, home address and the address of which he/she is stationed or can be found. NOTE: MILITARY SERVICE VOTER CLAIMING MILITARY STATION AS HOME ADDRESS FOR VOTING PURPOSES MAY NOT USE MILITARY ABSENTEE BALLOT UNLESS REGISTERED TO VOTE IN THE MUNICIPALITY WHERE SUCH STATION IS LOCATED.) Forms of application can be obtained from the undersigned.

Nicholas V. Caputo  
Essex County Clerk  
Hall of Records  
Newark, N.J. 07102  
961-7167 - 961-7168

Dated: February 15, 1985

### APPLICATION FOR MILITARY SERVICE VOTER OR APPLICATION BY RELATIVE OR FRIEND FOR A MILITARY SERVICE BALLOT

The undersigned, residing at \_\_\_\_\_

(Street and number or R.D. route)  
(Name of city or other municipality)  
In the state of \_\_\_\_\_  
does hereby make application for a military service ballot to be voted at the election to be held on \_\_\_\_\_ (date of election)  
for \_\_\_\_\_ (name of military service voter)  
Serial No. if in military service \_\_\_\_\_  
whose home address is at \_\_\_\_\_ (street and number or R.D. route)  
in \_\_\_\_\_ (name of city or other municipality)  
in the county of \_\_\_\_\_ in the State of New Jersey and who is stationed or can be found at \_\_\_\_\_

He is of the age of 18 years, has resided in the State of New Jersey at least 30 days and in said county at least 30 days counting the time that he has been absent from the election district in which he resides because of the service, work, status or relationship in the category indicated below and I certify before that he is qualified to vote as a military service voter in said election.

(NOTE: MILITARY SERVICE VOTER CLAIMING MILITARY STATION AS HOME ADDRESS FOR VOTING PURPOSES MAY NOT USE MILITARY ABSENTEE BALLOT UNLESS REGISTERED TO VOTE IN THE MUNICIPALITY WHERE SUCH STATION IS LOCATED.) Place an (X) in the box preceding the applicable category below.

- ☐ (a) \_\_\_\_\_ A person in military service
- ☐ (b) \_\_\_\_\_ A spouse or dependent of a person in category (a)
- ☐ (c) \_\_\_\_\_ A patient in a veterans' hospital
- ☐ (d) \_\_\_\_\_ A civilian attached to or serving with the Armed Forces of the United States
- ☐ (e) \_\_\_\_\_ A spouse or dependent of and accompanying or residing with a person in category (d)

(Print Signature)

(Signature of officer or military service voter)

State of New Jersey: \_\_\_\_\_

County of \_\_\_\_\_

The undersigned, being duly sworn on his oath according to law, says that the contents of the foregoing application are true.

Sworn and subscribed to before me this \_\_\_\_\_ day of \_\_\_\_\_ A.D. \_\_\_\_\_ (signature of officer)

(signature of officer authorized to administer oath) (signature of officer taking oath)

Only relative or friend need complete above affidavit.

**SHERIFF'S SALE**  
SUPERIOR COURT (CHANCERY) DIVISION, ESSEX COUNTY, DOCKET NO. F-167184 THE RICHARD GILL COMPANY, PLAINTIFF vs. ROBERT K. SMITH, et al. et al. DEFENDANTS, Execution for Sale of Mortgaged Premises.  
By virtue of the above stated writ of Execution, to me directed, I will expose for sale by Public Auction, in SHERIFF'S OFFICE, Essex County, Building in Newark on Tuesday, the 12th day of March next, at one thirty P.M. (Prevaling Time).  
MUNICIPALITY: City of East Orange, COUNTY and STATE: COUNTY OF ESSEX, STATE OF NEW JERSEY.  
STREET & STREET NO. 164 Stetson Street, TAX BLOCK & LOT: 189 LOT 68, DIMENSIONS OF LOT: 100.01' x 100.01'

**NEAREST CROSS STREET: 100.01 feet from the northeasterly line of Central Avenue.**  
A complete description can be found in the Essex County Register's Office.  
The approximate amount of the Judgment to be satisfied by said sale is the sum of THIRTY SIX THOUSAND EIGHT HUNDRED NINETEEN DOLLARS AND NINETY ONE CENTS (\$36,894.91), together with the costs of this sale.  
The Sheriff reserves the right to adjourn the sale from time to time as provided by Law.  
Newark, N.J., February 4, 1985  
THOMAS J. D'ALESSIO, Sheriff  
William M.E. Powers, Jr., Attorney  
The Belleville Times  
Feb. 14, 21, 28,  
Mar. 7, 1985  
Fee: \$73.32

No. B85-65

The Belleville Times  
Feb. 21, 1985  
Fee: \$171.08

## GOLD MARKET ANALYSIS CERTIFICATE

Bearer is entitled to a Market Analysis of his/her residential property by a Century 21 agent. Return this Certificate or call for an appointment.



**HOMES R US**  
544 Washington Ave.  
Belleville, N.J.  
751-8800

**Put Number 1 to work for you.**

Name \_\_\_\_\_  
Street Address \_\_\_\_\_  
City, State, Zip Code \_\_\_\_\_

**INSTRUCTIONS**  
1. Fill out application, print and sign your name where indicated.  
2. If you are a military service voter, you must also indicate if you are a spouse or dependent of a person in military service.  
3. If you are a relative or friend of a person in military service, you must indicate if you are a relative or friend of a person in military service.  
4. If you are a spouse or dependent of a person in military service, you must indicate if you are a spouse or dependent of a person in military service.  
5. If you are a relative or friend of a person in military service, you must indicate if you are a relative or friend of a person in military service.  
6. If you are a spouse or dependent of a person in military service, you must indicate if you are a spouse or dependent of a person in military service.

**TO:**  
NICHOLAS V. CAPUTO  
County Clerk, Essex County  
Hall of Records  
Newark, N.J. 07102

**MILITARY ABSENTEE BALLOT APPLICATION**

First Class  
Postage  
Here

No. B85-81

PUBLIC NOTICE  
NOTICE OF SCHOOL BUDGET AND BUDGET HEARING  
BOARD OF EDUCATION  
BELLEVILLE, NEW JERSEY

Current School Year 1984-85  
Estimated for Next Year 1985-86  
The Board of Education of Belleville, New Jersey, will hold a public hearing on the tentative budget for the school year 1985-1986 at an open meeting at School Number Ten, 527 Belleville Avenue, on Tuesday, March 5, 1985, at 9:00 p.m. Citizens are invited to attend this meeting, ask questions and offer suggestions pertaining to the budget. The proposed tentative budget will be open to inspection at the office of the Board of Education, 190 Cortland Street, for seven days prior to the public hearing.

SCHOOL DISTRICT BUDGET STATEMENT  
FOR THE SCHOOL YEAR 1985-86

	1983-84 Actual	1984-85 Actual	1985-86 Estimated
ENROLLMENTS			
1. Resident Pupils	4,516	4,347.5	4,300
2. Pupils in State Facilities	2		
3. Private School Placements	36	38	38
4. Pupils Received	3	2	
5. Total (Line 1+2+3+4)	4,557	4,387.5	4,340
6. Pupils Sent to Other Districts			
a. To Regular Programs			
b. To Special Education Programs	37	37	37

	1983-84 Actual	Increase/ (Decrease)	1983-84 Actual	1984-85 Actual	Increase/ (Decrease)	1984-85 Revised	1985-86 Anticipated
Line (1)							
CURRENT EXPENSE							
7. Balance Appropriation	736,039.00	38,690.85	774,729.85	420,827.00		420,827.00	340,000.00
Revenues from Local Sources	199,718.00		199,718.00				28,939.00
8a. Tax Levy Balance (Cap. Adj.)							
8b. Prior Yrs. Tax Levy Balance	8,214,942.00		8,214,942.00	9,377,876.00		9,377,876.00	9,462,122.00
9. Local Tax Levy	25,000.00	16,061.33	41,061.33	20,000.00		20,000.00	20,000.00
10. Tuition	100,000.00	201,335.66	301,335.66	100,000.00		100,000.00	1,480,896.00
11. Miscellaneous	8,339,942.00	27,396.99	8,557,338.99	9,497,876.00		9,497,876.00	9,582,122.00
12. SUB-TOTAL (lines 9 thru 11)							
Revenues from State Sources	4,385,551.00		4,385,551.00	4,637,258.00		4,637,258.00	5,227,221.00
13. Equalization Aid							
14. Appointed Transportation	327,609.00		327,609.00	236,602.00	28,939.00	265,541.00	323,492.00
15. Categorical Aids	1,134,623.00		1,134,623.00	1,323,967.00	16,762.00	1,340,729.00	1,480,896.00
16. Other State Aids	101,616.00		123,134.28	127,227.00	14,351.00	141,578.00	52,265.00
17. SUB-TOTAL	5,497,399.00	21,518.28	5,970,917.28	6,325,054.00	60,032.00	6,385,106.00	7,083,874.00
Revenues from Federal Sources							
18. P.L. 94-482 (Vocational J-2)	8,609.50		8,609.50		12,481.00	12,481.00	
19. P.L. 81-874 (Impact Current Expense J-1)							
20. P.L. 97-35 Chapter 1	145,000.00	109,774.00	254,774.00	145,000.00	148,002.00	293,002.00	145,000.00
21. P.L. 97-35 Chapter 2	68,166.75	68,166.75	68,166.75		49,037.00	49,037.00	20,000.00
22. P.L. 94-142 (Handicapped J-2)	80,000.00	63,490.00	143,490.00	80,000.00	63,400.00	143,400.00	80,000.00
23. Other	99,471.14	371,999.59	574,511.39	225,000.00	288,617.03	513,617.03	245,000.00
24. SUB-TOTAL	725,000.00	627,117.51	16,077,215.51	16,468,757.00	348,669.05	16,817,426.05	17,279,935.00
25. TOTAL CURRENT EXPENSE	15,450,098.00						
Capital Outlay		5,707.56	5,707.56				
26. Balance Appropriated							
Revenue from Local Sources							
27. Local Tax Levy	510,464.00		510,464.00	4,219.00		4,219.00	124,558.00
28. Withdrawal from Capital Reserve							
29. Miscellaneous	77,536.00		77,536.00	88,781.00		88,781.00	35,442.00
30. SUB-TOTAL	510,464.00		510,464.00	4,219.00		4,219.00	124,558.00
Revenue from State Sources							
31. Capital Outlay Aid							
32. Revenue from Federal Sources	588,000.00	5,707.56	593,707.56	93,000.00		93,000.00	160,000.00
33. TOTAL CAPITAL OUTLAY							
DEBT SERVICE							
34. Balance Appropriated							
Revenue from Local Sources							
35. Local Tax Levy	144,569.00		144,569.00	94,119.00		94,119.00	95,011.00
36. Withdrawal from Capital Reserve							
37. Miscellaneous	144,569.00		144,569.00	94,119.00		94,119.00	95,011.00
38. SUB-TOTAL	289,138.00		289,138.00	188,238.00		188,238.00	190,022.00
Revenue from State Sources							
39. Debt Service Aid Type II	80,724.00		80,724.00	83,076.00		83,076.00	67,529.00
40. TOTAL DEBT SERVICE	225,293.00		225,293.00	177,195.00		177,195.00	162,540.00
Additional State School							
41. Building Aid Ch. 10							
42. Building Aid Ch. 177							
43. Building Aid Ch. 74	109,250.00		109,250.00	105,500.00		105,500.00	111,125.00
44. Total Additional State School	109,250.00		109,250.00	105,500.00		105,500.00	111,125.00
45. Building Aid (Lines 41 thru 43)							
46. Total Balances Unappropriated	16,372,641.00		17,377,465.66	16,844,452.00	348,669.05	17,193,121.05	17,713,600.00
Total Free Balances 7/1 83	51,385,651.32						
+ or (-) Adjustments	(33,496.32)						
Less Total Balances Appropriated During 1983-84	(980,155.41)						
Enter Column A Line 45	371,999.59						

CURRENT EXPENSE		ACCT. NO.	1983-84	1983-84		1983-84		1984-85		1984-85 Revised		1985-86	
Line (1)			Appropriations (2)	Transfers In/Out (3)	Revised Appropriations (4)	Expenditures (5)	Appropriations (6)	Transfers In/Out (7)	Appropriations (8)	Expenditures (9)	Appropriations (10)		
ADMINISTRATION													
47	Salaries	110	359,518.00	4,655.15	363,973.15	363,973.15	452,389.00		452,389.00		487,702.00		
48	Contracted Services	120	1,200.00	59,272.56	134,022.56	134,022.56	110,370.00		110,370.00		68,750.00		
49	Other Expenses	130	58,000.00	14,960.58	73,860.58	73,860.58	66,700.00		66,700.00		105,000.00		
50	SUB-TOTAL		492,968.00	78,888.29	571,856.29	571,856.29	629,459.00		629,459.00		661,452.00		
INSTRUCTION													
51	Salaries-Principals	211	552,500.00	(19,762.03)	532,737.97	532,737.97	582,347.00		582,347.00		626,385.00		
52	Salaries-Supv. of Instr.	212	430,380.00	(12,217.66)	418,162.34	418,162.34	499,116.00		499,116.00		536,831.00		
53	Salaries-Teachers	213	6,726,175.00	(200,015.31)	6,526,159.69	6,526,159.69	6,964,244.00		6,964,244.00		6,803,622.00		
54	Salaries-Other Instr. Staff	214	686,839.00	(83,821.13)	(83,821.13)	(83,821.13)	688,380.00		688,380.00		676,325.00		
55	Salaries-Sec. & Cler. Asst.	215	355,618.00	(10,369.35)	345,248.65	345,248.65	335,166.00		335,166.00		369,000.00		
56	Other Salaries for Instr.	216	63,536.00	7,905.37	73,241.37	73,241.37	67,826.00		67,826.00		71,574.00		
57	Textbooks	220	82,047.00	1,936.73	83,983.73	83,983.73	95,744.00		95,744.00		58,667.00		
58	School Library & Audio-Visual Materials	230	62,025.00	(2,866.55)	59,168.45	59,168.45	76,907.00		76,907.00		62,547.00		
59	Teaching Supplies	240	295,000.00	17,373.74	312,373.74	312,373.74	324,459.00		324,459.00		285,384.00		
60	Other Expenses	250	99,700.00	15,045.32	114,745.32	114,745.32	112,493.00		112,493.00		120,000.00		
61	SUB-TOTAL		9,353,830.00	(284,990.87)	9,068,839.13	9,068,839.13	9,745,682.00		9,745,682.00		9,610,338.00		
ATTENDANCE AND HEALTH SERVICES													
62	Salaries-Attendance	310	17,550.00	(163.00)	17,387.00	17,387.00	18,257.00		18,257.00		20,780.00		
63	Other Expenses-Attn.	320	1,200.00	670.80	529.20	529.20	1,500.00		1,500.00		1,000.00		
64	Salaries-Health	410	145,200.00	137.00	145,337.00	145,337.00	157,305.00		157,305.00		174,550.00		
65	Other Expenses-Health	420	6,624.00	(474.00)	6,150.00	6,150.00	7,200.00		7,200.00		14,905.00		
66	SUB-TOTAL		170,574.00	(1,170.80)	169,403.20	169,403.20	184,262.00		184,262.00		210,735.00		
TRANSPORTATION													
67	Salaries	510	149,087.00	(13,802.81)	135,284.19	135,284.19	105,612.00		105,612.00		107,400.00		
68	Contr. Serv. & Pub. Convey.	520	276,987.00	(52,450.98)	224,536.02	224,536.02	294,200.00		294,200.00		273,000.00		
69	Replacement of Vehicles	530									35,000.00		
70	Purchase of New Vehicles	535					49,325.00		49,325.00				
71	Pupils Transp. Insurance	540		6,700.00	888.00	7,088.00	10,500.00		10,500.00				
72	Curricular Activities	545									12,000.00		
73	Other Expenses	550	108,791.00	2,494.74	111,285.74	111,285.74	117,791.00		117,791.00		107,500.00		
74	SUB-TOTAL		540,765.00	(62,871.05)	477,893.95	477,893.95	577,428.00		577,428.00		536,900.00		
OPERATION													
75	Salaries	610	823,402.00	(27,097.74)	796,304.26	796,304.26	844,197.00		844,197.00		868,351.00		
76	Contracted Services	620	18,460.00		18,460.00	18,460.00	19,205.00		19,205.00		5,800.00		
77	Heat	630	297,000.00	(28,231.59)	268,768.41	218,704.24	295,000.00		295,000.00		250,000.00		
78	Utilities	640	279,500.00	9,654.81	289,154.81	272,427.04	303,500.00		303,500.00		291,000.00		
79	Supplies	650	44,200.00		44,200.00	44,200.00	44,306.00		44,306.00		44,844.00		
80	Other Expenses	660	7,400.00	1,659.43	9,059.43	9,059.43	8,500.00		8,500.00		8,800.00		
81	SUB-TOTAL		1,469,962.00	(44,652.72)	1,425,309.28	1,358,515.84	1,514,708.00		1,514,708.00		1,490,513.00		
MAINTENANCE													
82	Salaries	710	279,705.00	13,047.65	292,752.65	292,752.65	307,710.00		307,710.00		317,087.00		
83	Contracted Services	720	120,102.00	49,379.67	169,481.67	169,481.67	120,000.00		120,000.00		120,000.00		
84	Replacement of Equipment	730	119,377.00	25,404.98	144,781.98	128,746.42	111,508.00		111,508.00		44,844.00		
85	Purchase of New Equipment	740	77,500.00	(13,582.51)	63,917.49	91,082.51	97,269.00		97,269.00		60,320.00		
86	Other Expenses	750	184,230.00		184,230.00	181,733.15	200,000.00		200,000.00		200,000.00		
87	SUB-TOTAL		780,934.00	101,614.81	882,548.81	863,722.92	836,487.00		836,487.00		742,451.00		
FIXED CHARGES													
88	Employee Retirement Contribution	810	396,318.00	719.04	397,037.04	370,722.57	394,641.00		394,641.00		418,803.00		
89	Insurance & Judgments (Exclude U.C.C. Amount)	820	738,179.00	139,256.65	877,435.65	860,009.65	891,122.00		891,122.00		892,850.00		
90	Unemployment Comp. (U.C.C.)	820b	45,000.00	(45,000.00)			45,000.00		45,000.00		45,000.00		
91	Rental of Land	830	35.00	65.00	100.00	100.00	35.00		35.00		100.00		
92	Interest on Current Loans	840											
93	Other Fixed Charges	850											
94	Tuition-Reguar	870	589,750.00		589,750.00	524,529.99	636,035.00		636,035.00		662,200.00		
95	Tuition-Special	870	46,413.00		46,413.00	46,413.00	60,117.00		60,117.00		72,909.00		
96	Tuition-State Facilities	870	1,815,095.00	95,040.69	1,910,735.69	1,801,773.21	2,026,950.00		2,026,950.00		2,091,862.00		
SUNDRY ACCOUNTS													
Food Services													
97	Salaries	910											
98	Other Expenses	920											
99	Expenses to cover deficits	930											
100	SUB-TOTAL												
STUDENT BODY ACTIVITIES													
101	Salaries	1010	103,894.00	12,653.49	116,547.49	115,437.38	111,363.00		111,363.00		123,000.00		
102	Other	1020	78,382.00	21,877.28	100,459.28	100,459.28	79,871.00		79,871.00		8,000.00		
103	SUB-TOTAL		182,476.00	34,530.77	217,006.77	215,896.66	191,234.00		191,234.00		131,000.00		
COMMUNITY SERVICES													
104	Salaries-Recreation	1111											
105	Other Expenses-Recrea.	1121											
106	Salaries-Civ. Activities	1122	9,100.00		9,100.00		9,100.00		9,100.00		9,100.00		
107	Other Exp.-Civ. Act.	1122											
108	SUB-TOTAL		9,100.00		9,100.00		9,100.00		9,100.00		9,100.00		
Special Projects (Local)													
109	Salaries	1113											
110	Other Expenses	1123											
111	SUB-TOTAL												
112	Edible Salaries	114											
113	Edible Other Exp.	115											
114	Nonrepro. Salaries	116											
115	Nonrepro. Other Exp.	117											
116	Transp. Salaries	118											
117	Transp. Other Exp.	119											
118	Neuro. Imp. Salaries	120											
119	Neuro. Imp. Other Exp.	121											
120	Percep. Imp. Salaries	122											
121	Percep. Imp. Other Exp.	123											

continued from page 18)

J-1 CURRENT EXPENSE	APPROPRIATIONS									
	ACCT NO.	1983-84 Appropriation (2)	Transfers In (Transfers Out) Revised Approp. (3)		1983-84 Expenditure (4)	Transfers In (Transfers Out) Revised Approp. (5)		1984-85 Expenditure (6)	Transfers In (Transfers Out) Revised Approp. (7)	
122 Emot. Dist.-Salaries										85,200.00
123 Emot. Dist.-Other Exp.										5,400.00
124 Multi. Hand.-Salaries										23,382.00
125 Multi. Hand.-Other Exp.										1,263.00
126 Soc. Maladi.-Salaries										
127 Soc. Maladi.-Other Exp.										
128 Aud. Hand.-Salaries										
129 Aud. Hand.-Other Exp.										
130 Ortho. Hand.-Salaries										
131 Ortho. Hand.-Other Exp.										
132 Chron. Ill-Salaries										
133 Chron. Ill-Other Exp.										
134 Vis. Hand.-Salaries										
135 Vis. Hand.-Other Exp.										
136 Comm. Hand.-Salaries										17,400.00
137 Comm. Hand.-Other Exp.										1,025.00
138 Pre-Sch. Hand.-Salaries										16,800.00
139 Pre-Sch. Hand.-Other Exp.										778.00
140 Supplement-Salaries										27,945.00
141 Supplement-Other Exp.										
142 Speech-Salaries										128,200.00
143 Speech-Other Exp.										2,221.00
144 Home Inst.-Salaries										48,000.00
145 Home Inst.-Other Exp.										
146 Resource Rm.-Salaries										203,300.00
147 Resource Rm.-Other Exp.										12,976.00
148 Loc. Voc.-Salaries										121,650.00
149 Loc. Voc.-Other Exp.										33,727.00
150 J-1 SUB-TOTAL		14,816,304.00	(83,610.38)	14,732,693.62	14,527,903.20	15,716,304.00		15,716,304.00		16,498,398.00
J-2 Special Projects - Federal-Schools										
Federal Projects:										
151 P.I. 94-482 (Vocational)			6,609.50	6,609.50	6,609.50		12,481.00		12,481.00	
152 P.I. 94-482 (Chapter 1)	145,000.00		148,464.85	293,464.85	275,883.35	145,000.00	293,002.00		293,002.00	145,000.00
153 P.I. 97-35 (Chapter 2)			68,166.75	68,166.75	68,166.75		49,037.00		49,037.00	20,000.00
154 P.I. 94-142 (Handicapped)	80,000.00		63,490.00	143,490.00	143,490.00	80,000.00	63,400.00		143,400.00	80,000.00
155 Adult Basic Education (P.I. 91-230)										
156 Other Federal Projects			120,048.14	120,048.14	119,618.65		13,697.05		15,697.05	
157 Social Services	225,000.00		408,779.24	633,779.24	615,768.25	225,000.00	288,617.05		513,617.05	245,000.00
158 S.C.E. Salaries	239,338.00		(11,600.80)	227,737.20	227,737.20	326,056.00			326,056.00	383,394.00
159 S.C.E. Other Exp.										
160 Bilingual Salaries	42,840.00		30,968.25	73,808.25	73,808.25		54,170.00		70,932.00	80,878.00
161 Bilingual Other Exp.										
162 Nonpublic Textbooks	1161		15,421.00	15,421.00	14,626.70		16,561.00		16,561.00	6,254.00
163 Nonpublic Auxiliary Services	1170		54,424.00	54,424.00	38,944.76		46,248.00		61,672.00	33,356.00
164 Nonpublic Handicapped Services	1180		25,169.00	56,940.00	30,461.20	64,420.00	(19,010.00)		45,410.00	12,655.00
165 Other			7,287.00	7,287.00	7,287.00		17,935.00		17,935.00	
166 SUB-TOTAL	383,794.00		92,999.25	476,793.25	434,040.91	507,453.00	311,113.00		538,566.00	516,537.00
SPECIAL SCHOOLS AND EVENING SCHOOLS										
J-3 Accredited Evening/Adult High School										
167 Salaries										
168 Supplies										
169 Other Expenses										
170 SUB-TOTAL										
J-4 Adult Education										
171 Salaries		5,000.00	305.00	5,305.00	5,305.00	5,000.00		5,000.00		6,000.00
172 Supplies										
173 Other Expenses		20,000.00	3,610.13	23,610.13	23,240.04	15,000.00		15,000.00		14,000.00
174 SUB-TOTAL		25,000.00	3,915.13	28,915.13	28,540.04	20,000.00		20,000.00		20,000.00
J-5 Regular Evening Schools										
175 Salaries										
176 Supplies										
177 Other Expenses										
178 SUB-TOTAL										
J-6 Summer School										
179 Salaries										
180 Supplies										
181 Other Expenses										
182 SUB-TOTAL										
J-7 Vocational Evening										
183 Salaries										
184 Supplies										
185 Equipment										
186 Other Expenses										
187 SUB-TOTAL										
J-8 Evening School for Foreign Born										
188 Salaries										
189 Supplies										
190 Other Expenses										
191 SUB-TOTAL										
J-9 TOTAL CURRENT EXPENSES		15,450,098.00	422,083.24	15,872,181.24	15,606,257.40	16,468,757.30	319,730.05	16,788,487.05		17,279,935.00
J-10 Capital Outlay										
192 Sites	1220									
193 Buildings	1230	568,000.00	25,461.55	593,461.55	593,461.55	93,000.00		93,000.00		160,000.00
194 Equipment-Regul.	1240	20,000.00	(19,723.99)	246.01	246.01					
195 Equipment-Regul.	1250	588,000.00	5,707.56	593,707.56	593,707.56	93,000.00		93,000.00		160,000.00
196 TOTAL CAPITAL OUTLAY										
S Debt Service										
197 Principal	1320	202,428.00		202,428.00	200,000.00	160,000.00		160,000.00		150,000.00
198 Interest	1330	22,865.00		22,865.00	22,865.00	17,195.00		17,195.00		12,540.00
199 Sinking Fund	1340									
200 TOTAL DEBT SERVICE		225,293.00		225,293.00	222,865.00	177,195.00		177,195.00		162,540.00
Additional State School Building Aid Ch. 10										
201 Principal										
202 Interest										
Additional State School Building Aid Ch. 177										
203 Principal										
204 Interest										
Additional State School Building Aid Ch. 74										
205 Principal		30,650.00		30,650.00	30,000.00	30,000.00		30,000.00		40,000.00
206 Interest		79,250.00		79,250.00	79,250.00	75,500.00		75,500.00		71,125.00
207 Total Additional State School Building Aid		109,250.00		109,250.00	105,000.00			105,000.00		111,125.00
208 Totals		16,372,641.00		427,790.00	16,800,431.00	16,532,079.96	319,730.05	17,164,182.05		17,713,600.00
209 Total Balances June 30, 1984		845,385.70	Restored FY85 Transportation Aid		28,939.00					
210. Total Expenditures and Balances June 30, 1984		17,377,465.66			17,193,121.05					

RECAPITULATION OF BALANCES	SPECIAL SCHOOLS OR CURRENT EXPENSE									
	(J-1) Line (1)	SPECIAL SCHOOLS OR CURRENT EXPENSE (J-2 - J-8)		CAPITAL OUTLAY		DEBT SERVICE		CAPITAL RESERVE FUND		TOTALS
		(2)	(3)	(4)	(5)	(6)	(7)	(8)	(9)	
211. Free Appropriation Balances 6/30/84 (from the Audit)		\$774,268.86	\$71,116.84	\$	\$	\$	\$	\$	\$	\$ 845,385.70
212. Amount appropriated in Adopted FY 84-85 Budget		(420,827.00)	( )	( )	( )	( )	( )	( )	( )	(420,827.00)
213. Additional amount appropriated during FY 84-85		( )	(33,879.61)	( )	( )	( )	( )	( )	( )	(33,879.61)
214. Additional Balance anticipated during FY 84-85		140,000.00								140,000.00
215. Free Appropriation Balances 6/30/85 (est.)		493,441.86	37,237.23	( )	( )	( )	( )	( )	( )	530,679.09
216. Amount appropriated in FY 85-86		(340,000.00)								(340,000.00)
217. Free Appropriation Balances 6/30/86 (est.)		153,441.86	37,237.23							190,679.09

The Belleville Times  
Feb. 28, 1985  
Fee: \$609.12

No. 865.86

## Blight...

(Continued from page 1)

tion of the area "contains some of the oldest structures and also the most dilapidated buildings." It was also determined that eight of 10 structures declared poor are in this area.

Forty-six structures (41.1 percent) in the southern area were reported in fair or poor condition. The report stated that the deteriorating structures in this area has had a "direct impact on reinvestment."

### Commercial interest

While there are those in opposition to the blight proposal, there are those who believe blight is the only way to bring life back to the avenue.

"Blight is necessary for a number of reasons," said Joseph Dasaro, a member of the redevelopment agency. "Blight will enable the agency to package larger tracts of land to attract developer interest. The Avenue can once again become a vibrant commercial area which will create jobs and in the long run have a great impact on the community."

Dasaro said the community now is strictly on commercial development.

"The more ratables the township has, the more relief taxpayers will receive," he said. "The more taxpayers we have, the less taxes. People don't seem to understand that."

### Displacement a result

Dasaro attacked rumors stirring around the community that bulldozers will come in and destroy everything once blight is declared.

He did, however, say that displacements are a result of a blight declaration, but that those who have to move from the area are the first to have the option of space in a new commercial site. He added that the redevelopment agency is responsible for relocating those who are displaced.

Dasaro also said that property values are fixed at the time of blight by two independent appraisers who assess the property. If the property owner is not happy with the assessed value, he can have his own appraiser or go through the court system for a fair amount.

Dasaro said another reason

why blight is necessary is that it is a requirement for the Essex County Improvement Authority bond which appropriates \$10 million for each project only if blight is declared.

### Blighted Areas Act

The blight study conducted by Township Associates was made in accordance with the state's Blighted Areas Act. The act contains a definition of "blight" and lists five conditions for a blight declaration or the same being allowed to fall into so great a state of disrepair as to be untenable:

- Generality of buildings used as dwellings or the dwellings accommodations are substandard, unsafe, unsanitary, dilapidated, or possess any of such characteristics or are so lacking in light, air, or space, as to be conducive to unwholesome living;
- Discontinuance of the use of buildings previously used for manufacturing or industrial purposes, the abandonment of such buildings or the same being allowed to fall into so great a state of disrepair as to be untenable;
- Unimproved vacant land, which has remained so for a period of 10 years, and which land by reasons of its location, or remoteness from developed sections or portions of such municipality is not likely to be developed;
- Areas (including slum areas) with buildings or improvements, which by reason of dilapidation, overcrowding, lack of ventilation, or other factors are detrimental to the safety, health, morals, or welfare of the community; and
- A growing or total lack of proper utilization of areas caused by the condition of the title, diverse ownership of the real property, and other conditions, resulting in a stagnant and unproductive condition of land potentially useful and valuable for contributing to and serving the public health, safety and welfare.

### Alternatives

Commissioners are studying the recommendations from the planning board and redevelopment agency and will incorporate these proposals in their final decision. However, they have three options for the redevelopment of Washington Avenue. They can either accept the proposals of the redevelopment agency and planning board or accept neither and revise them.

Public opinion on the redevelopment issue is encouraged. The public hearing is tentatively scheduled to take place at School 7 on Jorammon Street, said Mayor Marotti.

## Library announces March calendar

Belleville Public Library announces its March calendar of events.

**March 1:** spelling bee at Silver Lake branch 3:30 to 4 p.m.; writing workshop conducted by Madeline Tiger Bass, poet and writer, 10 a.m. to noon. Call David Bryant at 759-9200 to register.

**March 2:** final date for essays to be submitted for Libraries in

Focus essay contest: "The Hobbit" will be shown at 10 a.m.

**March 5:** "How to Play Boggle" will be taught at 10 a.m. call the library at 759-9200 to register; preschool hour at 10 a.m. Pre-registration is required.

**March 6:** toddler story hour at 10 a.m.; preschool for children 9:30 to 11:30 a.m. at Silver Lake branch; writing workshop 10 a.m. to noon.

## Obituaries

### Edward M. Rutter dies in Florida

Edward M. Rutter Sr. died Feb. 12 after a short illness at Penrose Pines Hospital, Penrose Pines, Fla.

Born in Belleville and a graduate of Belleville High School, he moved to Ft. Lauderdale,



ShopRite Is The

# LOW PRICE LEADER

**GRAND OPENING!..ShopRite SUPER STORE**  
 TUES., FEB. 26, 1985...RT. 206 & AMWELL ROAD, HILLSBOROUGH, NEW JERSEY

**Plan Your Lenten  
Menus Around ShopRite's  
Freshness & Variety!**

\*Fresh Seafood Available Mon., Feb. 25, 1985.

**CUT FROM GRADE 'A' NEW ENGLAND  
Fresh Codfish  
Steaks\*** **1.99** lb.

 U.S. GRADE 'A' SWEET & TENDER  
**Fresh Small Scallops\*** **3.29** lb.  
 U.S. GRADE 'A' NEW ENGLAND  
**Fresh Scrod Cod Fillet\*** **2.39** lb.

**FROZEN & THAWED  
Large  
Shrimp** **5.99** lb.  
31-35 PER LB.

 FROZEN & THAWED, \$1.70 PER LB.  
**Small Shrimp** **3.99** lb.  
 FROZEN & THAWED, RECIPE READY  
**Sea Legs Supreme** **3.99** lb.

**The MEATing® Place**

U.S.D.A. CHOICE BEEF

**1st Cut  
Chuck Steaks**  
**99** lb. ANY SIZE PKG.

 U.S.D.A. CHOICE BEEF CHUCK  
**Boneless  
Pot Roast** **1.69** lb.

 ANY SIZE PKG., NOT LESS THAN 80%  
**Lean Ground Beef** **1.49** lb.  
 BEEF LOIN STEAKS  
**Porterhouse or T-Bone** **3.29** lb.  
 ShopRite SHOULDER (WATER ADDED)  
**Smoked Pork Butts** **1.89** lb.  
 LOIN PORTION, 3-11 CHOPS  
**Pork Chop Combo** **1.59** lb.  
 FROZEN ITALIAN, VEAL OR CHICKEN  
**Our Best Patties** **.99** lb.  
 QUAKERMAID FROZEN  
**Sandwich Steaks** **3.29** 32 oz. pkg.  
 ShopRite FROZEN, WHITE & DARK  
**Turkey Pan Roast** **3.49** 32 oz. pkg.  
 HOLLY FARMS' 3 BREAST HALVES WITH RIB CAGE,  
 2 DUMPLINGS AND 3 THINGS  
**Pick of the Chix** **.99** lb.

**The Grocery Place**

 OCEAN SPRAY REGULAR OR PINK  
**Grapefruit  
Juice** **1.29** 1-qt. 1 pt. bl.  
 CHUNK, LIGHT, IN OIL OR WATER  
**Chicken of  
The Sea Tuna** **.59** 6 1/2-oz. can.

 GROUND COFFEE  
**Chock Full O'Nuts** **1.99** 1-lb. can.  
 ALL VAR. ShopRite  
**Instant Oatmeal** **.99** 9-oz. box  
 REG. ADD-OR ELEC. PERK "BRIK PACK"  
**Folger's Coffee** **1.89** 1-lb. bag  
 GRAPE, RED OR LITE RED  
**Hawaiian Punch** **.69** 1-qt. 14 oz. can.  
 ICY POINT  
**Pink Salmon** **1.49** 15 1/2-oz. can.  
 ALL VAR., BETTY CROCKER, SUPERMOIST  
**Cake Mixes** **.69** 1-lb. 2 1/2 oz. box  
 REGULAR OR UNBLEACHED  
**Gold Medal Flour** **.79** 5-lb. bag  
 ShopRite  
**Chips Alot Cookies** **.99** 13-oz. bag  
 ShopRite (IN SHELL)  
**Roasted Peanuts** **1.79** 2-lb. bag  
 WHY PAY MORE?  
**Libby's Corned Beef** **.99** 12-oz. can.  
 TENDER COOK OR  
**Jack Rabbit Lentils** **.59** 1-lb. bag

**ShopRite Coupon** (278)  
 WITH THIS COUPON ECR  
 ONE (1) 1-PT. JAR OF PINK OR WHITE  
**Ocean Spray  
Grapefruit Juice**  
**.99**  
 Coupon good at any ShopRite Market. Limit one per family.  
 Effective Sun., Feb. 24 thru Sat., Mar. 2, 1985.

SAVE .30

**The Produce Place**

 U.S. #1 MAINE  
**Eastern  
Potatoes** **20.169** lb. bag

 TRY THEM SLICED OR IN SALADS  
**Fresh Mushrooms** **.99** 12-oz. pkg.  
 EXTRA LARGE 27 SIZE WHITE  
**Seedless Grapefruit** **4.99** 4 for  
 U.S. EXTRA FANCY WESTERN 120 SIZE GOLDEN OR 113 SIZE  
**Red Delicious Apples** **.59** lb.  
 LARGE SWEET  
**Imported Honeydews** **1.99** each  
 LARGE 88 SIZE, IMPORTED  
**Jaffa Oranges** **5.99** 5 for  
 IMPORTED FLAME RED  
**Seedless Grapes** **1.49** lb.  
 LARGE SIZE  
**Imported Nectarines** **.79** lb.  
 LARGE SIZE IMPORTED  
**Sweet Red Plums** **.79** lb.  
 SWEET  
**Red Ripe Watermelon** **.29** lb.  
 JET FRESH  
**Hawaiian Pineapples** **2.49** each  
 U.S. #1, 120 SIZE WESTERN  
**Anjou Pears** **.69** lb.  
 U.S. #1, 30 SIZE  
**Fresh Celery** **.49** stalk

**The Dairy Place**

 WHY PAY MORE?  
**Country Maid  
Crack Butter** **1.59** 1-lb. pkg.

 100% PURE CITRUS HILL  
**Orange Juice** **1.59** 1/2-gal. cart.  
 ASSORTED FLAVORS  
**Breyers Yogurt** **1.00** 3 6-oz. conts.  
 DORMAN'S  
**American Singles** **1.39** 12-oz. pkg.  
 ShopRite SLICED  
**Swiss Cheese** **2.99** 1-lb. pkg.  
 ShopRite MELLOW  
**Cheddar Sticks** **1.69** 10-oz. pkg.

**The Deli Place**

 WHY PAY MORE?  
**Wilson  
Meat Franks** **.89** 1-lb. pkg.

 SLICED  
**Smithfield Bacon** **1.49** 1-lb. pkg.  
 MILD OR TANGY  
**ShopRite Pork Roll** **2.79** 1 1/2-lb. pkg.  
 THORN APPLE VALLEY  
**Sliced Ham** **2.99** 1-lb. pkg.  
 ShopRite  
**Chicken Franks** **.89** 1-lb. pkg.  
 HEBREW NATIONAL  
**Franks or Knockwurst** **2.19** 12-oz. pkg.

**The Frozen Food Place**

 GRADE A MIXED VEG. CUT CORN  
 PEAS OR PEAS & CARROTS  
**ShopRite  
Vegetables** **.99** 24-oz. bag

**The Appy Place**

 STORE SLICED  
**Chicken  
Breast** **2.99** lb.

 STORE SLICED  
**Domestic Swiss Cheese** **2.99** lb.  
 STORE SLICED, DANISH MAJESTY  
**Imported Cooked Ham** **2.99** lb.  
 HEBREW NATIONAL  
**Bologna or Salami** **1.89** 1/2-lb.  
 SLICING  
**Gruyere Cheese** **1.99** lb.  
 FRESH MADE  
**Seafood or Shrimp Salad** **1.89** 1/2-lb.  
 GERMAN OR EGG AND  
**Potato Salad** **.79** lb.

**The Bakery Place**

 1/2 PRICE SALE ITEM!  
**Weight Watchers  
Raisin Bread** **.79** 1-lb. loaf

 NO PRES. ADDED, WH. E. BATTER BLEND OR REG.  
 SANDWICH OR ROUND TOP  
**ShopRite Bread** **.99** 22-oz. lvs.  
 PLAIN OR SUGAR  
**ShopRite Large Donuts** **1.49** 18-oz. pkg.  
 ShopRite 12-PK.  
**English Muffins** **.89** 12-oz. pkg.  
 ASSORTED VARIETIES  
**ShopRite Pretzels** **.99** 2-pkgs.  
**Health & Beauty Aids**

 CHOC. VAN. OR STRAWBERRY  
**Slim-Fast  
Pudding** **4.99** 16-oz. box

 WASH A BYE  
**Baby Wipes** **2.59** 150-ct. cont.  
 REG. OR UNSCENTED, SOLID  
**Secret Deodorant** **1.89** 2-oz. cont.  
 WHY PAY MORE?  
**Listerine Mouthwash** **2.89** 32-oz. bl.  
 VIOLENT TOOTH PASTE (3-0Z. TUBE) OR  
**Violeto Mouthwash** **5.00** 2 16-oz. bls.

**General Merchandise**

 10W30, 10W40 OR 20W50  
**Castrol GTX  
Motor Oil** **89** 1-qt. can.  
 WHY PAY MORE?  
**Windshield Wash** **.79** gal.  
 JVC VIDEO T-120  
**Cassette Tape** **4.99** each  
 WESTBEND LTD. QUAN. WHERE AVAIL.  
**Cordless Iron** **39.99** ea.  
 40, 60, 75 OR 100 WATT, STANDARD  
**GE Light Bulbs** **2.49** 4-pk.  
 36-0Z.  
**Thermos Super Quart** **5.99** ea.

 WOMAN'S DAY  
**Encyclopedia of Cooking** **2.99** each  
 VOL. #4  
 ON SALE  
 THIS WEEK

**Fresh Bake Shoppe** WHERE AVAIL.  
 12-OZ. TW.  
**Fresh Baked  
Egg Twist Rolls** **6.89** for  
 APPLE (RANDOM WEIGHT)  
**Lattice Coffee Cake** **2.19** lb.

**ShopRite Coupon** (278)  
 WITH THIS COUPON ECR  
 ONE (1) 8-OZ. BOX ALL VARIETIES  
**Quaker Chewy  
Granola Bars**  
**1.49**  
 Coupon good at any ShopRite Market. Limit one per family.  
 Effective Sun., Feb. 24 thru Sat., Mar. 2, 1985.

SAVE .20

 NEW! LAUNDRY DETERGENT  
**Tide  
Liquid** **2.99** 1/2-gal. bl.  
 CAMPBELL'S  
**Cream of  
Mushroom Soup** **3 \$1** 10 1/2-oz. cans

**ShopRite**
**The Family Pharmacy Dept.**
**One Plus One Equals Three**

New Math? No! This is simply a way of describing a drug-drug interaction. Since most drugs can cause side effects of varying degrees, it's not surprising that one person may be using two drugs with similar side-effects, such as a cold remedy and a cough syrup, each with the capability of causing drowsiness. Instead of a simple additive effect, each may intensify the other so that the two together are more than twice as potent as either alone. Call us at ... 235-0821

Sharp Digital Medical Thermometer Each \$7.99	
* Inderal 40 mg Tablets	100 - \$15.49
(Furosemide)	
* Lasix 40 mg Tablets	100 - \$9.99
* TriVilfor Drops 0.25 mg	50cc - \$5.99
(Diltiazem)	
* Cardizem 30 mg. Tablets	100 - \$18.99
(Clonidine HCL)	
* Catapres 0.1 mg. Tablets	100 - \$18.99
Expires March 2, 1985	
* Requires Prescription	

Copyright 1984 Wakefern Food Corp.

## See The High Quality Our Low Prices Can Buy!

 In order to assure a sufficient supply of sales items for all our customers, we must reserve the right to limit the purchase to units of 4 of any sales items, except where otherwise noted. Not responsible for typographical errors.  
 Prices effective Sun., Feb. 24 thru Sat., March 2, 1985. None sold to other retailers or wholesalers. Artwork does not necessarily represent item on sale, it is for display purposes only. Copyright WAKEFERN FOOD CORPORATION 1985.